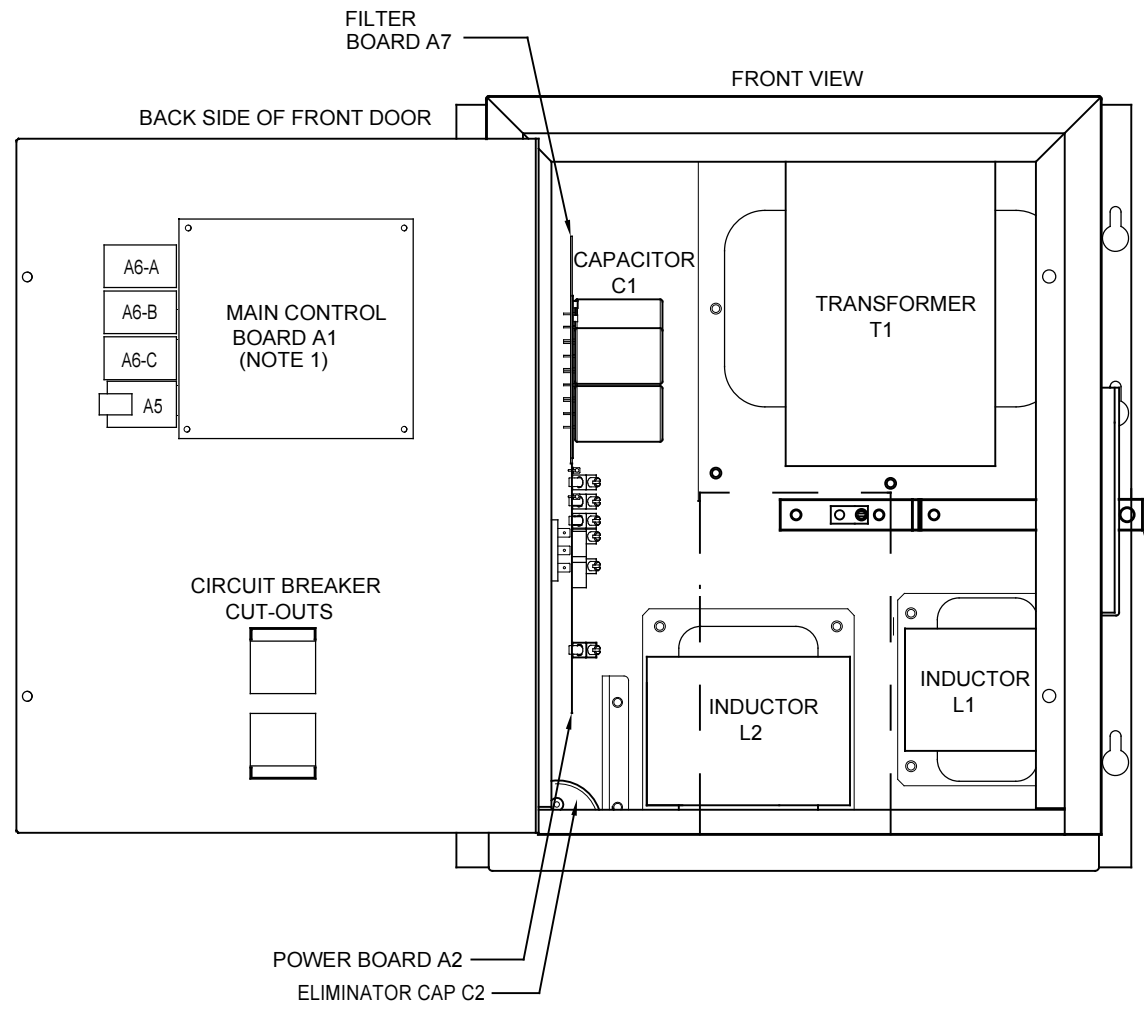
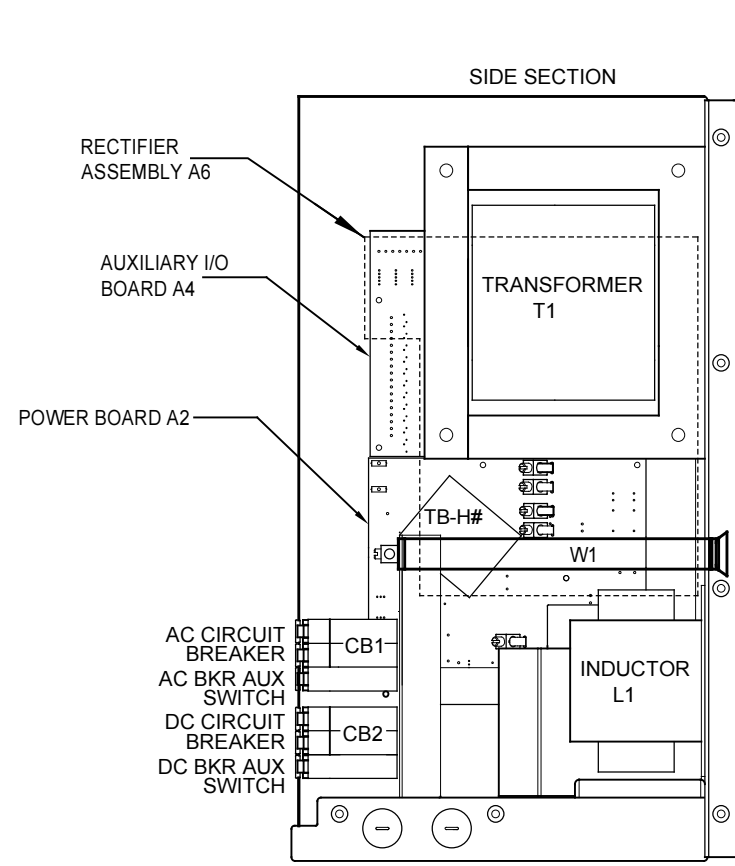
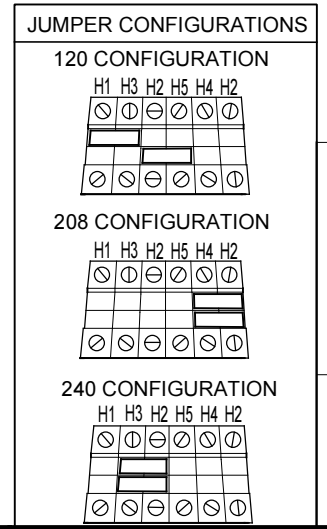
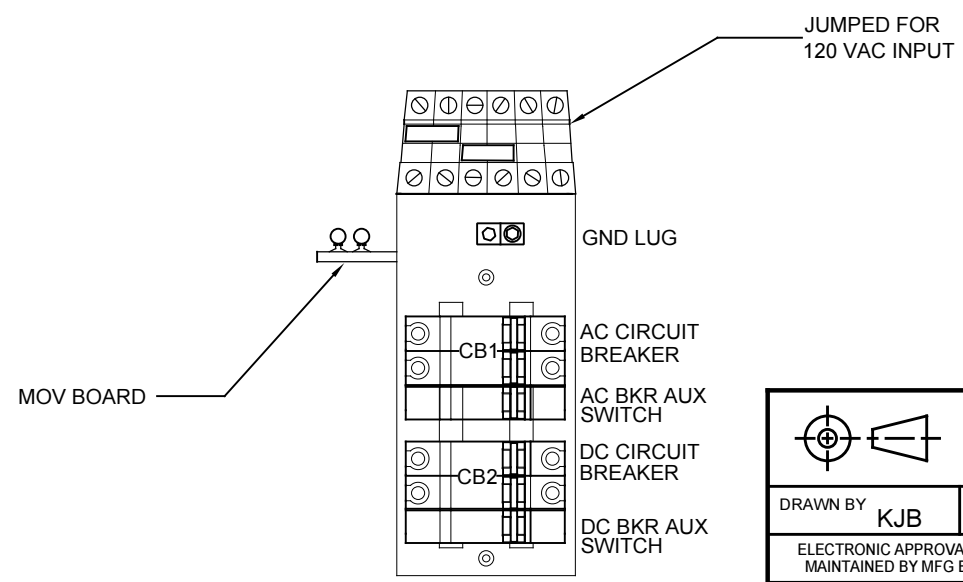


REVISION HISTORY TABLE				
ECN No.	REV.	DESCRIPTION	DATE	APPROVED
25915	0	INITIAL RELEASE	04/07/2017	BB



I/O TERMINAL	DESCRIPTION - TYPE	CONNECTION
CB2	POS/NEG OUTPUT TERMINALS - CU-ALUMINUM COMPRESSION LUG	#14-6 AWG
REM SENSE(+/-)	POS/NEG REMOTE SENSE TERMINALS (A2) - TERMINAL BLOCK	#22-14 AWG
GND LUG	USER GROUND TERMINAL - CU-ALUMINUM COMPRESSION LUG	#14-6 AWG
CB1	AC INPUT TERMINALS - CU-ALUMINUM COMPRESSION LUG	#14-6 AWG
TB6	SUMMARY ALARM TERMINAL BLOCK (A1) - SOLDERLESS COMPRESSION	#22-14 AWG
TB8	TEMPCO PROBE (A2) INTERCONNECTION TERMINAL BLOCK	#22-14 AWG
TB4	AUX I/O RELAY CONTACTS (A4)	#22-14 AWG
TB1	AUX I/O BINARY INPUTS (A4)	#22-14 AWG
TB3	AUX I/O ANALOG INPUTS (A4)	#22-14 AWG

NOTES:
 1) FOR DETAIL VIEWS OF ALL PC BOARDS (A1, A2, A3, A4 etc.) SEE DRAWING JE5253 -99.
 2) SAFETY COVER DISPLAYS COMPONENT LAYOUT DIAGRAM, AND CONNECTION DIAGRAM.



SYM	STANDARD COMPONENT DESCRIPTION
A1	MAIN CONTROL PC BOARD
A2	POWER BOARD
A3	CAPACITOR BOARD
C1	FILTER CAPACITOR
CB1	AC INPUT CIRCUIT BREAKER (CD2)
CB2	DC OUTPUT CIRCUIT BREAKER (CD2)
L1	MAIN INDUCTOR
L2	INDUCTOR
T1	POWER TRANSFORMER

SYM	FEATURED OPTION COMP DESCRIPTION
A4	AUXILIARY I/O BOARD
A5	ETHERNET ADAPTER
A6 A-C	SERIAL ADAPTER
C2	BATTERY ELIMINATOR FILTER CAP
W1	COPPER BUS BAR (POS LEG)

DRAWN BY	KJB	DATE	04/07/17
ELECTRONIC APPROVAL SIGNATURES MAINTAINED BY MFG ECN LOG			
TITLE ATEVO SERIES BATTERY CHARGER INTERNAL COMPONENT LAYOUT: STYLE-5054		DRAWING No	JE5252-99
		REV	0
		B	
SCALE	NTS	SALES No	JE5252-99
		SHEET	1 OF 1