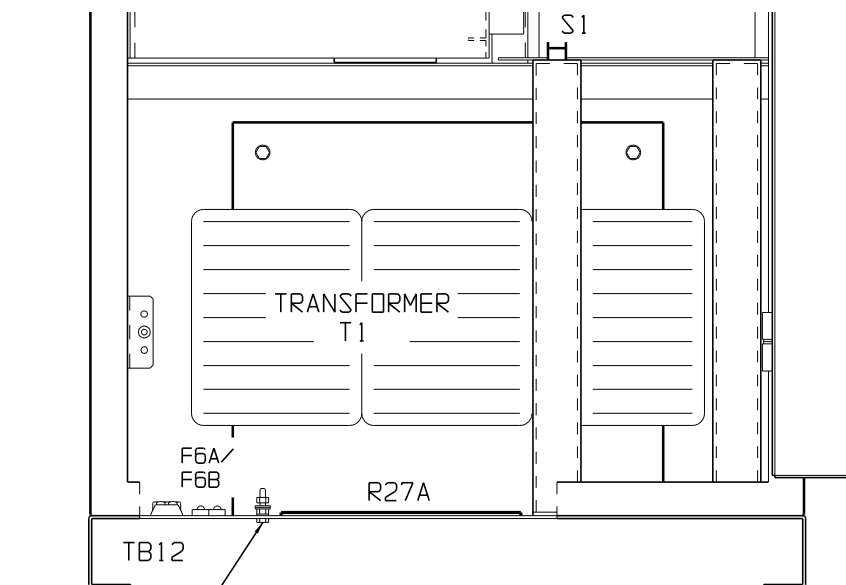
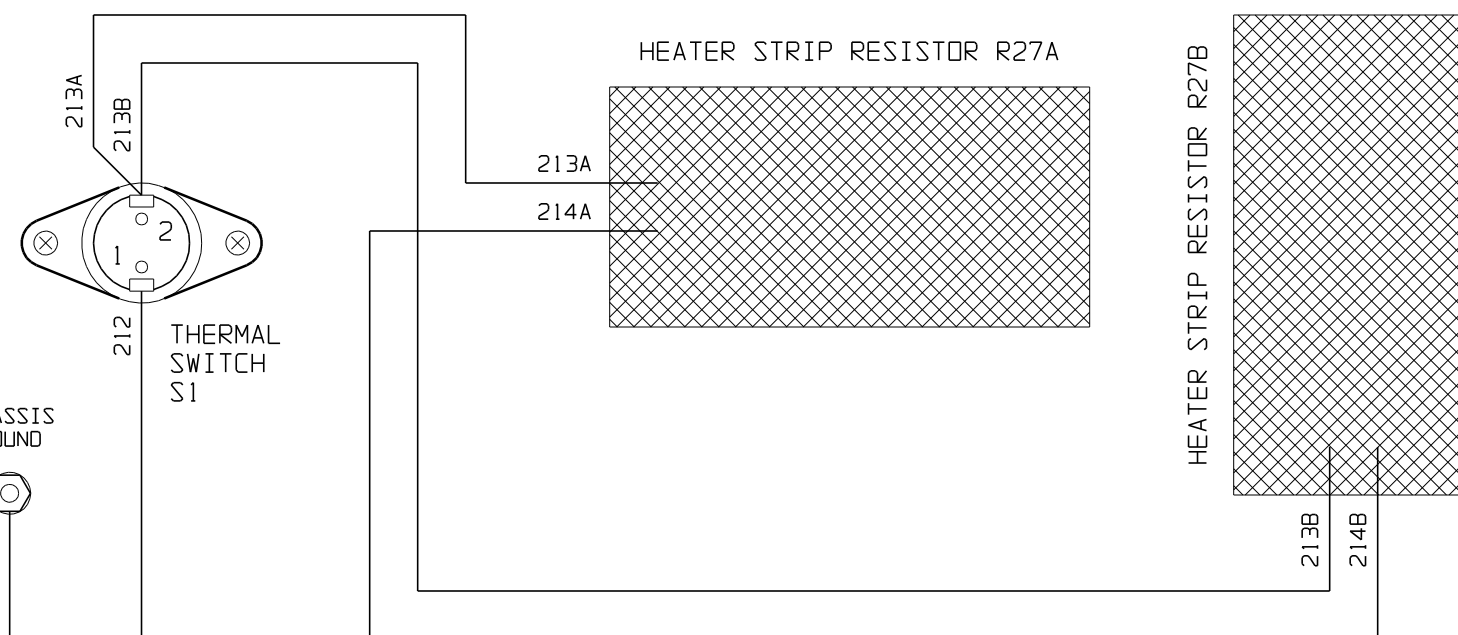


STYLE-5030
CABINET ASSY
(LEFT SECTION)

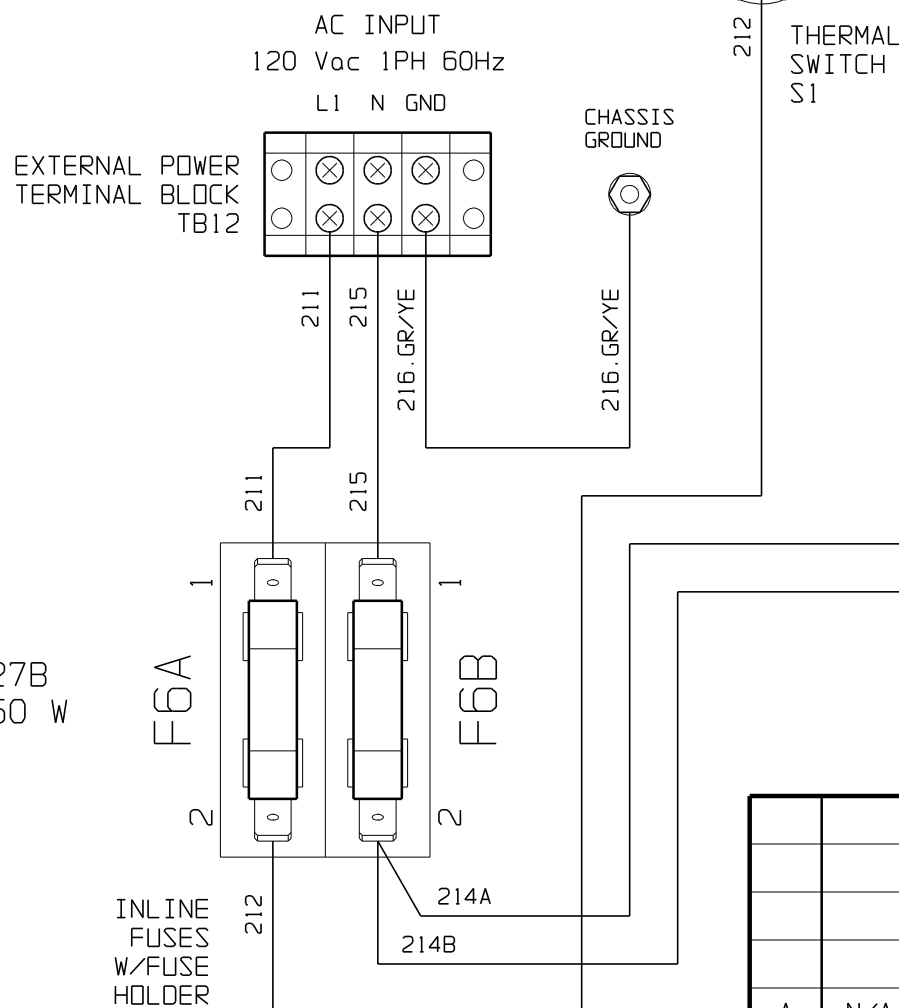
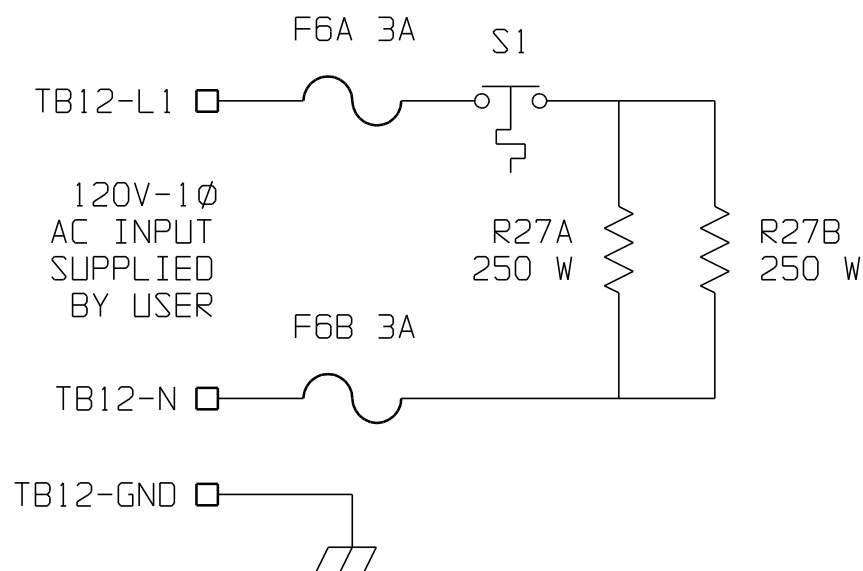


STYLE-5030
CABINET ASSY
(FRONT VIEW)

W I R E L I S T				
WIRE No.	LENGTH	AWG	FROM	TO
211		14	TB12-L1	F6A-1
212		14	F6A-2	S1-1
213x		14	S1-2	R27x-1
214x		14	R27x-2	F6B-2
215		14	F6B-1	TB12-N
216		12	TB12-G	CHASSIS GROUND



OPTION SCHEMATIC



NOTE:

- 1) AT SERIES STYLE-5030 CABINET HEATER ASSEMBLY MANUFACTURER'S INTERNAL PART NUMBER: EJ5166-00
- 2) THERMOSTAT (S1) OPENS ON RISE TO 80°F, AND IS SELF-RESETTING.
- 3) COMPONENTS ARE CONNECTED WITH FLAME-RETARDANT SWITCHBOARD INSULATION TYPE WIRING, IDENTIFIED ON EACH END WITH NUMBER-CODED MARKERS. GROUND WIRE# 216 IS GREEN WITH YELLOW STRIPE. ALL WIRE RATED 105°C AND 600V. INSULATION SATISFIES NEMA WC-5 COLD BEND TO -40°C AND UL-62 (VW-1) VERTICAL FLAME RESISTANCE.
- 4) AC INPUT POWER TERMINAL BLOCK (TB12) IS 3-POSITION BARRIER TYPE, WITH 8-32 BINDER HEAD SCREW TERMINALS, ACCEPTING LUGS FOR #16-10 AWG WIRE.

			THIRD ANGLE PROJECTION			
			DRAWN BY MCR 121809		TITLE CUSTOMER INSTRUCTIONS AT SERIES BATT CHGR STYLE-5030 CABINET HEATER ASSY: EJ5166-00	
			ELECTRONIC APPROVAL SIGNATURES MAINTAINED BY MFG ECN LOG		DRAWING No JA5060-04 REV A B	
A	N/A	121809	UNLESS OTHERWISE NOTED DIMENSIONS ARE IN INCHES. TOLERANCES ARE:		SCALE NTS PART No JA5060-04 SHEET 1 OF 1	
REV	ECN No	DATE				