

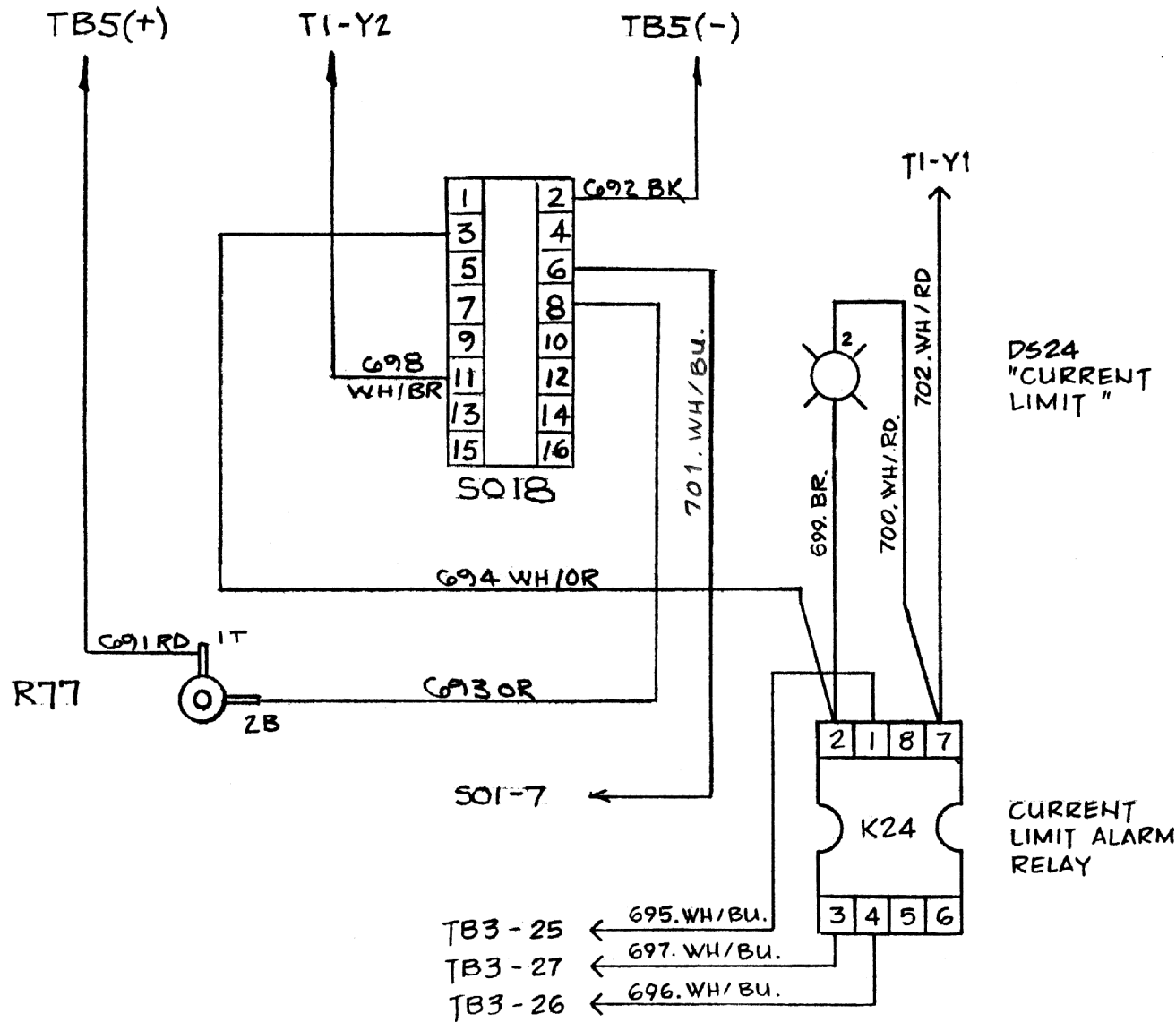
CURRENT LIMIT ALARM PC BOARD ASSY A18

CONTROL MODULE A1 (REF.)

NOTES:

- 1) ADJUST POTENTIOMETER (R18) SO THAT ALARM RELAY (K24) IS ACTIVATED AT CURRENT LIMIT.
- 2) RESISTOR (R77) IS NOT USED ON 12 Vdc OPTION (EJ0137-01).
- 3) ALARM CONTACTS (TB3-25/26/27) SHOWN IN NON-ALARM CONDITION.

3				 THIRD ANGLE PROJECTION	TITLE SCR/SCRF Series Current Limit Alarm w/Ind (3PH)		
2	21763	09/07/09	ND				
1	4620	01/05/88	WAH	DRAWN BY	CIA	06/08/85	DWG No EJ0137-3X
1	1706	06/17/85	WKB	APPROVED	WKB	06/17/85	
0	1468	04/04/85	WAH	UNLESS OTHERWISE NOTED, DIMENSIONS ARE IN INCHES AND TOLERANCES ARE:			A REV 2
REV	ECN No	DATE	APP				
SCALE		NTS	PART No	EJ0137-0#	SHEET 1 OF 2		



WIRE LIST				
No.	CODE	GAUGE	FROM	TO
691	RD	#20 AWG	TB5(+)	R77-1T
692	BLK	#20 AWG	TB5(-)	SO18-2
693	OR	#20 AWG	R77-2B	SO18-8
694	WH/OR	#20 AWG	SO18-3	K24-2
695	WH/BU	#20 AWG	K24-1	TB3-25
696	WH/BU	#20 AWG	K24-4	TB3-26
697	WH/BU	#20 AWG	K24-3	TB3-27
698	WH/BR	#20 AWG	SO18-11	T1-Y2
699	BR	#20 AWG	K24-2	DS24-1
700	WH/RD	#20 AWG	K24-7	DS24-2
701	WH/BU	#20 AWG	SO18-6	SO1-7
702	WH/RD	#20 AWG	K24-7	T1-Y1

NOTES:

- * SO1-7: WIRE# 701.WH/BU CONNECTS TO PIN #7 ON SOCKET (SO1) OF THE GK0048-02 SCR/SCRF SERIES THREE PHASE CONTROL MODULE PC BOARD (A1).
- RESISTOR (R77) IS NOT USED ON 12 Vdc OPTION (EJ0137-01).

		THIRD ANGLE PROJECTION	
DRAWN BY	CIA	06/08/85	TITLE
APPROVED	WKB	06/17/85	SCR/SCRF Series Current Limit Alarm w/Ind (3PH)
UNLESS OTHERWISE NOTED, DIMENSIONS ARE IN INCHES AND TOLERANCES ARE:			DWG No
			EJ0137-3X
SCALE	NTS	PART No	EJ0137-0#
		SHEET	2 OF 2
		REV	2