

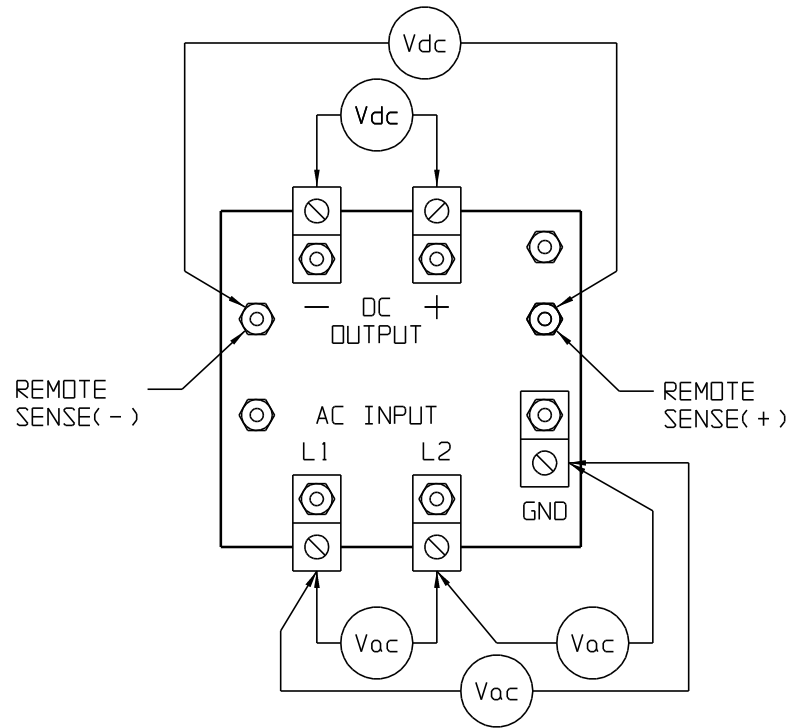
# INSTRUCTIONS FOR FIELD REPLACEMENT OF RECTIFIER ASSEMBLY

THESE INSTRUCTIONS ARE APPLICABLE FOR REPLACEMENT OF THE RECTIFIER ASSEMBLY FOR ANY AT10.1 GROUP I (6-25 Adc) BATTERY CHARGER. NOTE THAT THE RECTIFIER ASSEMBLY IS TREATED AS A SINGLE ENTITY (A6), AND TROUBLESHOOTING WITHIN THE RECTIFIER ASSEMBLY IS NOT SUPPORTED.

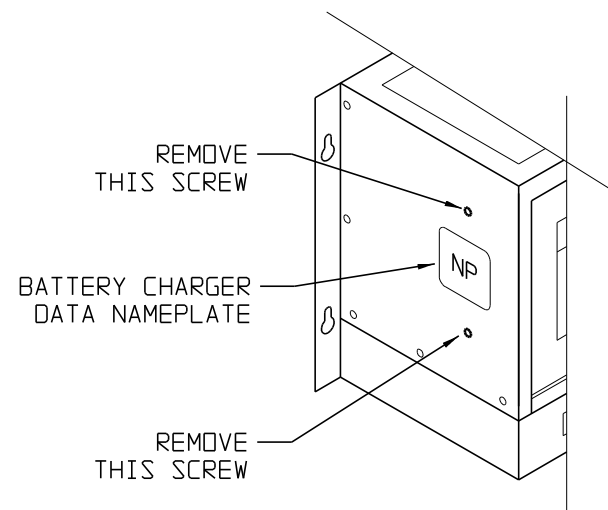
### WARNING

DISCONNECT AND LOCK OUT ALL POWER TO THE AT10.1 BEFORE STARTING ANY MAINTENANCE PROCEDURES. TURN THE AC POWER OFF AT THE DISTRIBUTION PANEL UPSTREAM FROM THE CHARGER. DISCONNECT THE BATTERY FROM THE CHARGER OUTPUT TERMINALS. THIS INCLUDES REMOTE SENSE WIRES IF THEY WERE INSTALLED.

STEP 1) USING A VOLTMETER, VERIFY THAT ALL POTENTIAL VOLTAGES ON THE I/O PANEL ARE AT ZERO.



STEP 2) REMOVE THE TWO (2) SCREWS FROM THE MIDDLE OF THE EXTERIOR LEFT SIDE OF THE ENCLOSURE (ABOVE AND BELOW NAMEPLATE).

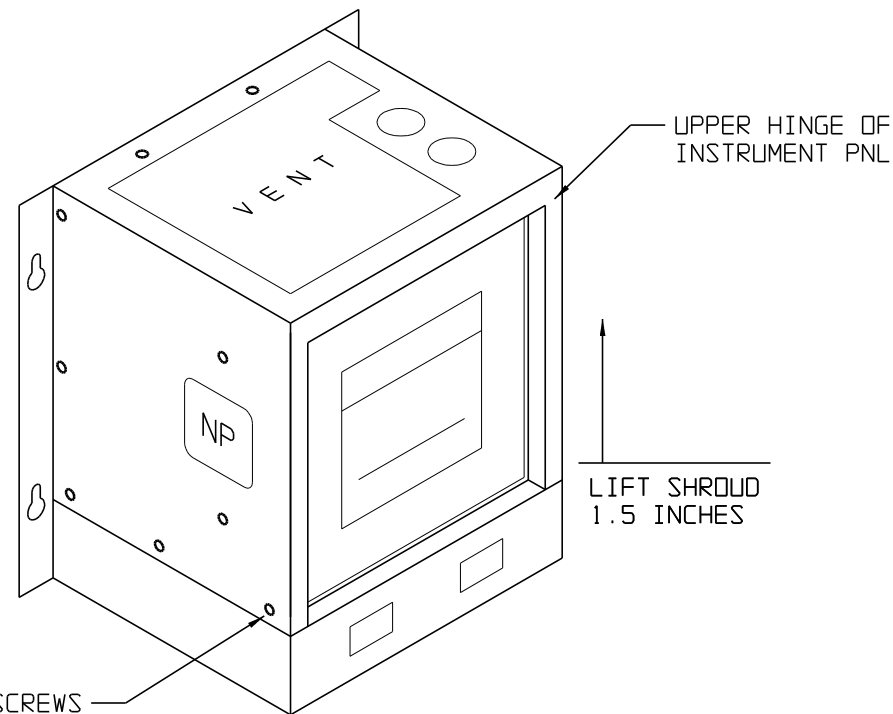


STEP 3) THIS STEP ONLY APPLIES TO THE SMALLER STYLE-586 AT10.1 ENCLOSURE. IF YOUR AT10.1 IS IN THE LARGER STYLE-594 ENCLOSURE, PROCEED TO STEP 4. USE THE TABLE BELOW TO DETERMINE YOUR ENCLOSURE SIZE.

OUTPUT CURRENT	OUTPUT VOLTAGE			
	12	24	48	130
6				
12				
16				
20				
25				

STYLE-586 ENCLOSURE
  STYLE-594 ENCLOSURE

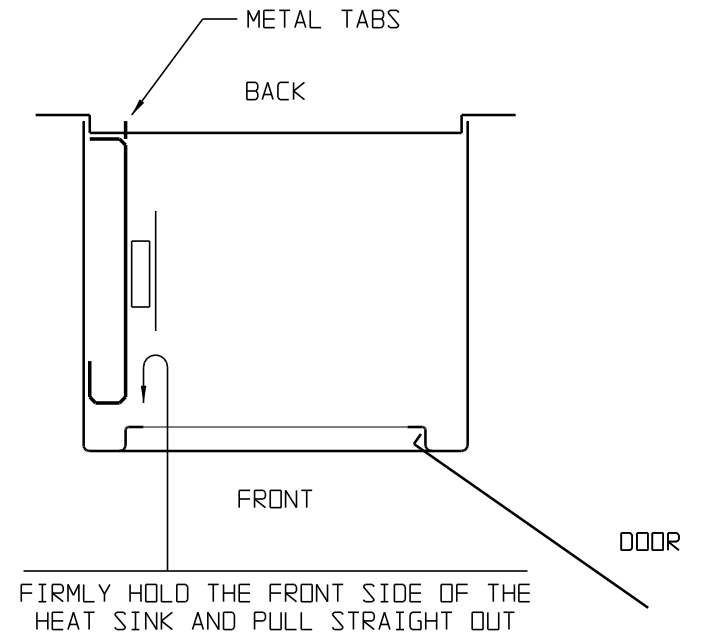
IN ORDER TO REMOVE THE RECTIFIER ASSEMBLY IN THE STYLE-586 ENCLOSURE, THE SHROUD MUST BE LIFTED 1.5in OFF OF THE CHASSIS. TO DO THIS, REMOVE THE TWELVE (12) SCREWS AROUND THE PERIMETER OF THE SHROUD. WHEN LIFTING THE SHROUD, BE CAREFUL TO SECURE THE INSTRUMENT PANEL. THE UPPER HINGE OF THE INSTRUMENT PANEL IS HELD IN PLACE BY THE SHROUD.



REMOVE (12) SCREWS AROUND PERIMETER OF THE SHROUD

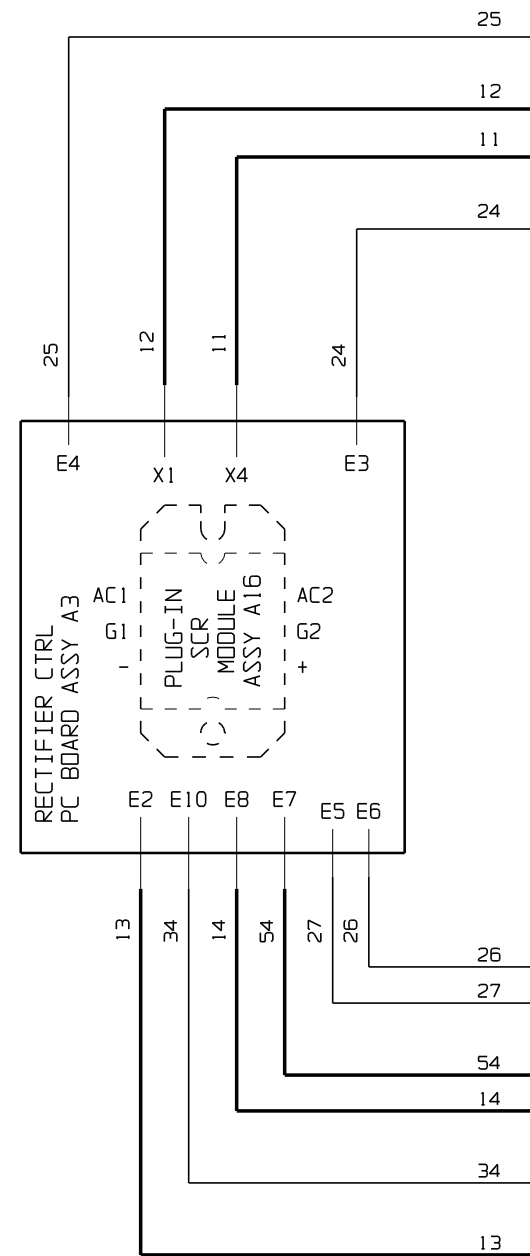
STEP 4) WORKING THROUGH THE DOOR, FIRMLY HOLD THE FRONT EDGE OF THE HEATSINK AND PULL IT STRAIGHT OUT. NOTE HOW THE HEAT-SINK METAL TABS SLIDE OUT OF THE HOLES ON THE REAR CHASSIS. PULL THE RECTIFIER ASSEMBLY AND THE ATTACHED WIRES OUT OF THE ENCLOSURE. FOR THE SMALLER STYLE-586 ENCLOSURE, THE SHROUD MUST NOW BE LIFTED UP 1.5in FOR REMOVAL OF THE RECTIFIER ASSEMBLY.

AT10.1 TOP VIEW CROSS-SECTION (LOOKING THROUGH SHROUD AT RECTIFIER ASSEMBLY)



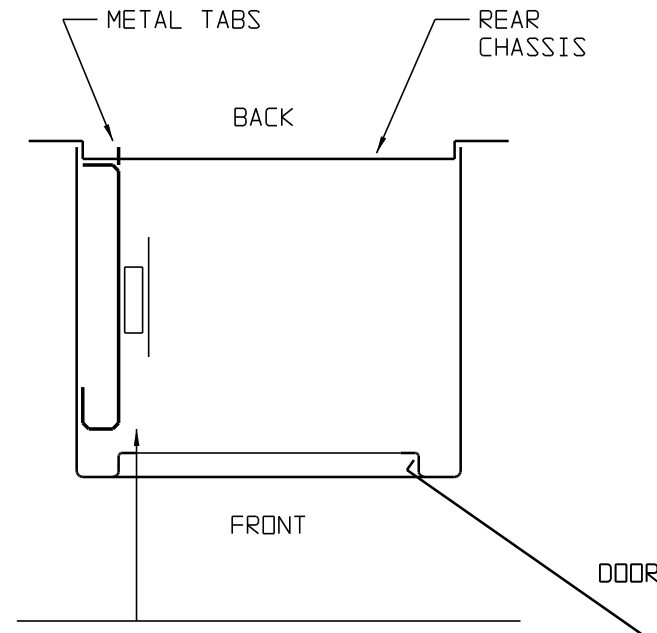
				THIRD ANGLE PROJECTION			
2	21605	040809	ND	DRAWN BY <i>ND</i>	022604	TITLE AT10.1 SERIES G1 RECTIFIER HEATSINK ASSY FIELD INSTALLATION / REMOVAL	
1	E1804	101304	N/A	APPROVED ND	040809	DRAWING No JD5009-00	
0	E1573	022604	N/A	UNLESS OTHERWISE NOTED DIMENSIONS ARE IN INCHES. TOLERANCES ARE:		REV 2	<b>B</b>
REV	ECN No	DATE	APP			SCALE NTS	PART No JD5009-00

STEP 5) WITH THE RECTIFIER ASSEMBLY OUT OF THE ENCLOSURE, DISCONNECT ALL WIRES FROM THE HEATSINK THAT ORIGINATE ELSEWHERE IN THE AT10.1. DISCARD THE DEFECTIVE RECTIFIER ASSEMBLY. IF RECTIFIER WAS UNDER WARRANTY, PLEASE RETURN IT TO THE FACTORY.



STEP 6) HOLD THE REPLACEMENT RECTIFIER ASSEMBLY IN FRONT OF THE AT10.1 (IN THE SAME ORIENTATION AS THE OLD), AND RECONNECT ALL WIRES REMOVED FROM THE OLD ASSEMBLY. TO BE SURE OF CORRECT REPLACEMENT, SEE THE WIRING DIAGRAM INCLUDED OR APPENDIX C OF USER'S MANUAL. WHEN YOU ARE DONE, CHECK YOUR WORK TO BE SURE ALL WIRES ARE CONNECTED TO THE PROPER TERMINALS, AND ALL LUGS ARE FULLY SEATED. IF ANY LUG DOES NOT FIT SNUGLY, DISCONNECT IT AND CAREFULLY TIGHTEN THE EARS USING LONG-NOSED PLIERS, THEN RECONNECT THE LUG.

STEP 7) ROTATE THE RECTIFIER ASSEMBLY INTO POSITION WITHIN THE ENCLOSURE. AGAIN, THE SHROUD OF THE SMALLER STYLE-586 ENCLOSURE MUST BE LIFTED UP 1.5in TO REPLACE RECTIFIER ASSEMBLY. LINE UP THE PLASTIC ANCHORS WITH MOUNTING HOLES ON THE REAR CHASSIS, AND PUSH THE ASSEMBLY FIRMLY INTO PLACE.

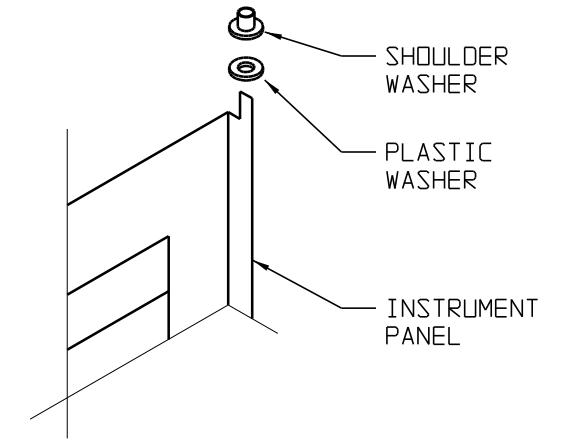


LINE UP THE METAL TABS WITH THE MOUNTING HOLES ON THE REAR CHASSIS AND PUSH THE ASSEMBLY FIRMLY INTO THE REAR CHASSIS.

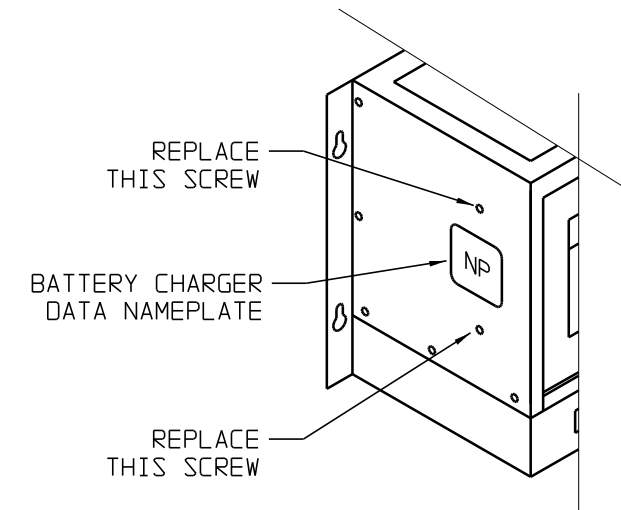
AT10 TOP VIEW CROSS-SECTION  
LOOKING THROUGH SHROUD  
AT RECTIFIER ASSEMBLY

STEP 8) THIS STEP ONLY APPLIES TO THE SMALLER STYLE-586 AT10.1 ENCLOSURE. IF YOUR AT10.1 IS IN THE LARGER STYLE-596 ENCLOSURE, PROCEED TO STEP 9.

REPLACE THE SHROUD IN ITS FULLY-SEATED POSITION. MAKE SURE THE INSTRUMENT PANEL, WITH ITS HINGED HARDWARE, ARE PROPERLY ASSEMBLED. SEE DETAIL BELOW. REPLACE THE TWELVE (12) SCREWS AROUND PERIMETER OF THE SHROUD.



STEP 9) REPLACE THE TWO (2) SCREWS ON THE LEFT SIDE OF THE SHROUD, ABOVE AND BELOW NAMEPLATE.



STEP 10) INSPECT YOUR WORK AND MAKE SURE ALL STEPS WERE PERFORMED. REPLACE THE PLEXIGLAS SAFETY SHIELD. CLOSE THE DOOR TO THE AT10.1. RE-ENERGIZE DC, AND THEN AC POWER. REFER TO THE AT10.1 USER'S MANUAL FOR PROPER START-UP. IF THE AT10.1 DOES NOT PROPERLY START, REFER TO THE TROUBLE-SHOOTING CHART IN SECTION 3 OF THE USER'S MANUAL.

THIRD ANGLE PROJECTION			
DRAWN BY	<i>OK</i>	022604	TITLE
APPROVED	ND	040809	AT10.1 SERIES G1 RECTIFIER HEATSINK ASSY FIELD INSTALLATION / REMOVAL
UNLESS OTHERWISE NOTED DIMENSIONS ARE IN INCHES. TOLERANCES ARE:		DRAWING No	REV
		JD5009-00	2
SCALE	NTS	PART No	<b>B</b>
		JD5009-00	SHEET 2 OF 2