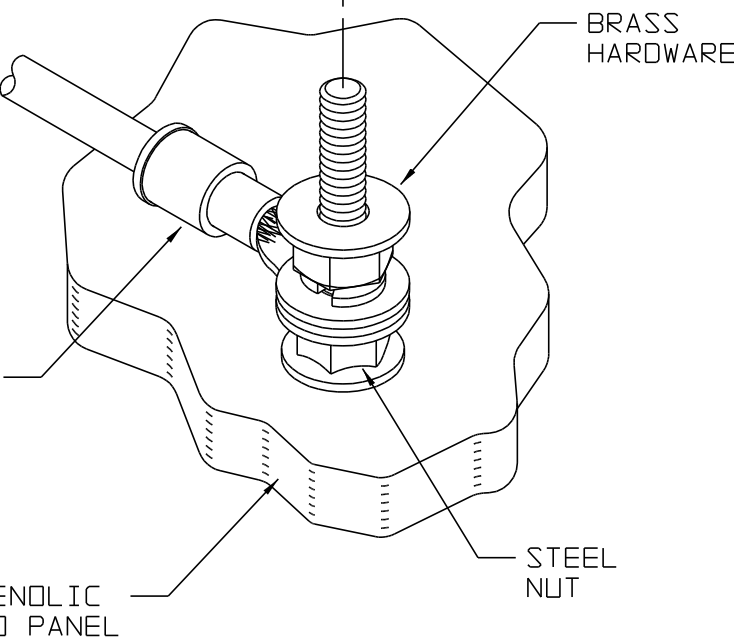
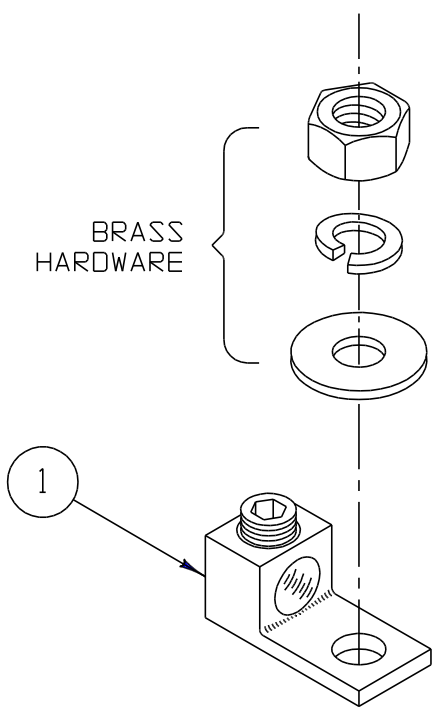


RECOMMENDED PROCEDURE

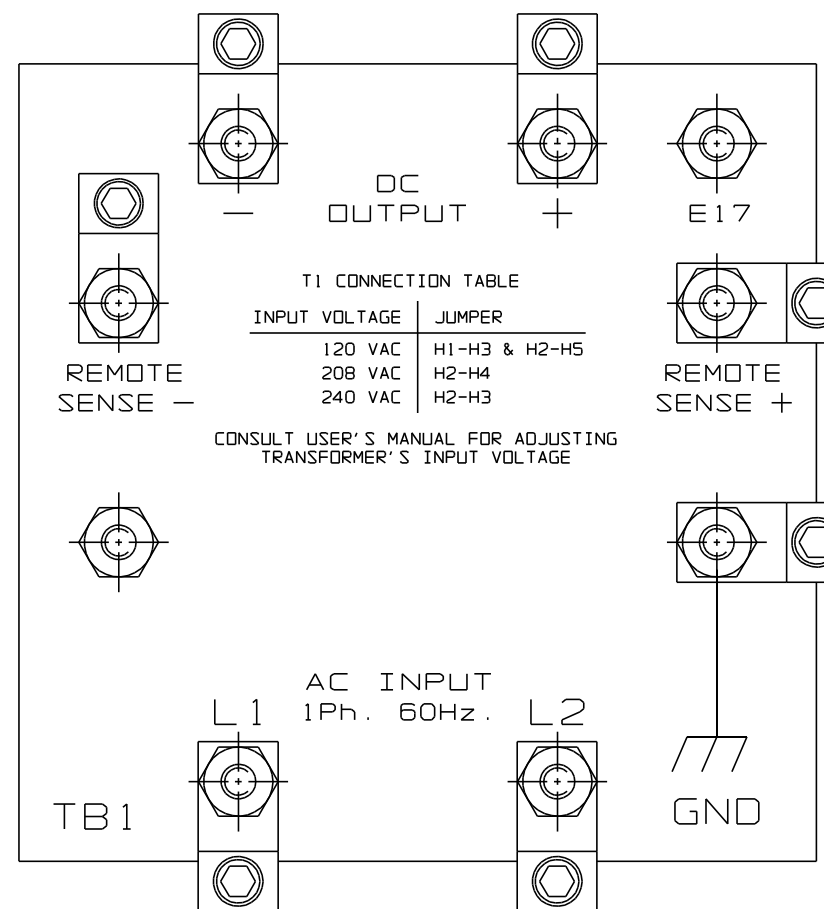
- 1) REMOVE TOP LOADING HARDWARE (BRASS: HEX NUT, SPLIT WASHER AND FLAT WASHER).
- 2) INSTALL COMPRESSION TYPE TERMINAL LUG (ITEM 1) AS SHOWN IN DIAGRAM AT LEFT. VERIFY ORIENTATION OF TERMINAL LUGS WITH DIAGRAM AT RIGHT.
- 3) REPLACE BRASS HARDWARE FROM STEP 1 ONTO TERMINAL LUG AND TIGHTEN ACCORDING TO TORQUE SPECIFICATION TABLE BELOW RIGHT.



IMPORTANT

ALL HARDWARE MUST BE MOUNTED AS SHOWN. BRASS HARDWARE CANNOT BE INTERCHANGED WITH STEEL!

INPUT-OUTPUT PANEL



BILL OF MATERIAL: EI0197-00

ITEM NUMBER	PART No.	DESCRIPTION	QTY
①	RC0056-04	TERM,UTIL, 14-6 AWG	7
-	JA0097-00	CUSTOMER INSTRUCTIONS	1

BOLT SIZE	TORQUE RANGE
8	10-15
10	16-24
1/4	57-77
5/16	119-158
3/8	17-23 (*)
1/2	43-57 (*)

ALL TORQUE RANGES ARE IN IN-LBS EXCEPT AS NOTED (*) RATED IN FT-LBS

REVISIONS				APPROVALS	DATE	TITLE			
REV	ECN No	DATE	APP	DRAWN BY PAC	040692	AT10 COMPRESSION LUGS CUSTOMER INSTALLATION INSTRUCTIONS			
0	8696	040692		APPROVED		DRAWING No		REV	
UNLESS OTHERWISE NOTED DIMENSIONS ARE IN INCHES. TOLERANCES ARE:						JA0097		0	B
FRA.		DEC.		ANG.		SCALE		JOB No	SHEET
± 1/64		± 0.015		± 0.05		-		-	01 OF 01