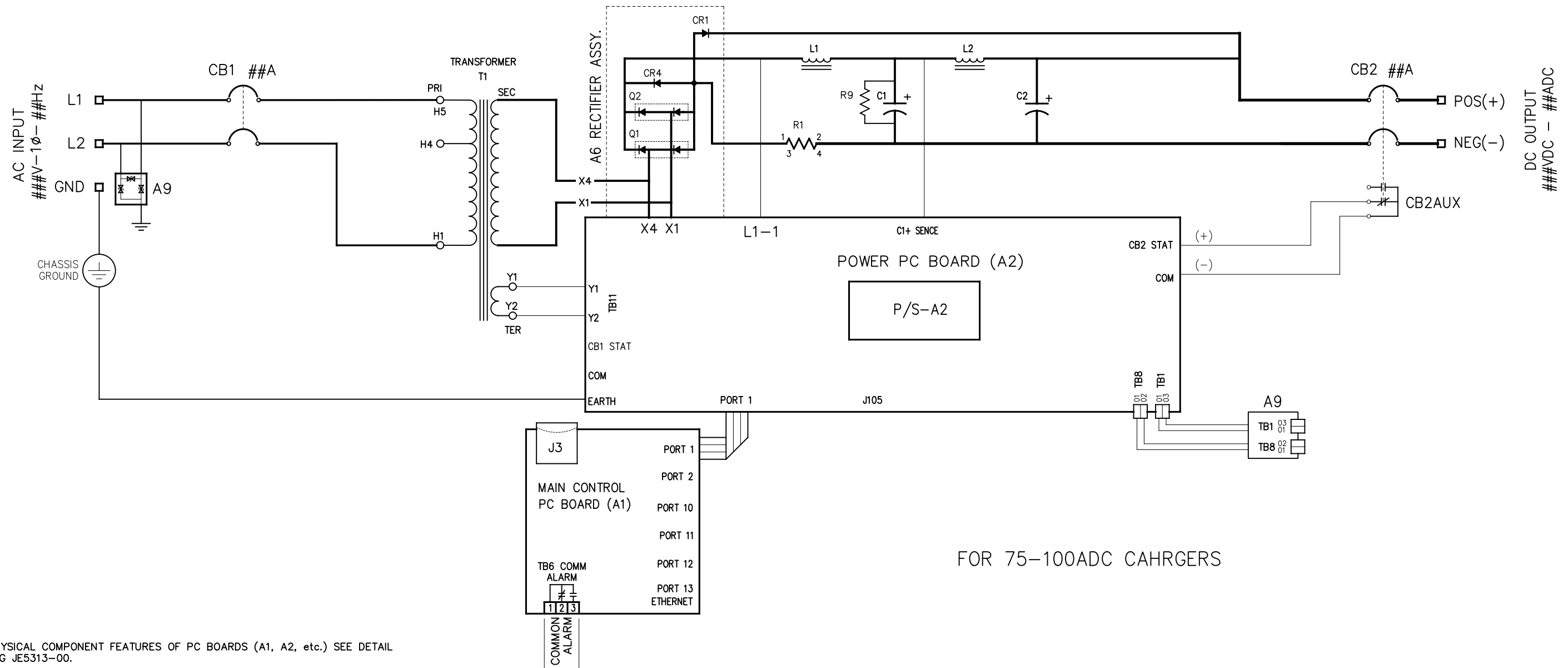


NOTES:

1. FOR PHYSICAL COMPONENT FEATURES OF PC BOARDS (A1, A2, etc.) SEE DETAIL DRAWING JE5313-00.
2. ALL ALARM CONTACTS SHOWN IN NON-ALARM STATE, WITH CHARGER ENERGIZED AND ALARM RELAYS ENERGIZED (FAIL SAFE). ALL ALARM CONTACTS WILL CHANGE STATE WHEN CHARGER IS POWERED DOWN. CONTACT RATING IS: 0.5A @ 125VAC/VDC RESISTIVE.

REV. 0	DRN BY KJB	CHK BY MCR	APP BY MCR	DATE 12/10/19	DRN BY KJB	DATE 12/10/19	HINDLEPOWER 1075 Saint John Street Easton, PA 18042-6661 PH 610-330-9000 FAX 610-330-8510 www.hindlepowerinc.com
DESCRIPTION STANDARD DRAWINGS.					CHK BY MCR	DATE 12/10/19	
					APP BY MCR	DATE 12/10/19	
					TITLE ATEVO BATTERY CHARGER 1Ø STYLE 5070 SCHEMATIC W/O OPTIONS		
					SCALE NTS	DWG No JE5311-00	REV 0 SHEET 1 OF 2



FOR 75-100ADC CAHRGERS

NOTES:

1. FOR PHYSICAL COMPONENT FEATURES OF PC BOARDS (A1, A2, etc.) SEE DETAIL DRAWING JE5313-00.
2. ALL ALARM CONTACTS SHOWN IN NON-ALARM STATE, WITH CHARGER ENERGIZED AND ALARM RELAYS ENERGIZED (FAIL SAFE). ALL ALARM CONTACTS WILL CHANGE STATE WHEN CHARGER IS POWERED DOWN. CONTACT RATING IS: 0.5A @ 125VAC/VDC RESISTIVE.

REV. 0	DRN BY KJB	CHK BY MCR	APP BY MCR	DATE 12/10/19	DRN BY KJB	DATE 12/10/19	HINDLEPOWER 1075 Saint John Street Easton, PA 18042-6661 PH 610-330-9000 FAX 610-330-8510 www.hindlepowerinc.com
DESCRIPTION STANDARD DRAWINGS.					CHK BY MCR	DATE 12/10/19	
					APP BY MCR	DATE 12/10/19	
TITLE ATEVO BATTERY CHARGER 1Ø STYLE 5070 SCHEMATIC W/O OPTIONS							SCALE B DWG No JE5311-00
							REV 0 SHEET 2 OF 2