

NOTES:

- FOR PHYSICAL COMPONENT FEATURES OF PC BOARDS (A1, A2, etc.) SEE DETAIL DRAWING JE5313-00.
- ALL ALARM CONTACTS SHOWN IN NON-ALARM STATE, WITH CHARGER ENERGIZED AND ALARM RELAYS ENERGIZED (FAIL SAFE). ALL ALARM CONTACTS WILL CHANGE STATE WHEN CHARGER IS POWERED DOWN. CONTACT RATING IS: 0.5A @ 125VAC/VDC RESISTIVE.
- DEFAULT RELAY ALARM CONFIGURATION SHOWN BELOW. CAN BE CHANGED TO DESIRED CONFIGURATION BY USER.

A4	DESCRIPTION	LACHING	DELAY
RELAY #1	HIGH VOLTAGE DC	DISABLED	30 SECONDS
RELAY #2	LOW VOLTAGE DC	DISABLED	30 SECONDS
RELAY #3	DC OUTPUT FAILURE	DISABLED	30 SECONDS
RELAY #4	LOW AC SUPPLY	DISABLED	30 SECONDS
RELAY #5	POSITIVE GROUND FAULT	DISABLED	30 SECONDS
RELAY #6	NEGATIVE GROUND FAULT	DISABLED	30 SECONDS

REV. 0	DRN BY KJB	CHK BY MCR	APP BY MCR	DATE 12/10/19	DRN BY KJB	DATE 12/10/19
DESCRIPTION				STANDARD DRAWINGS.	CHK BY MCR	DATE 12/10/19
				APP BY MCR	DATE 12/10/19	

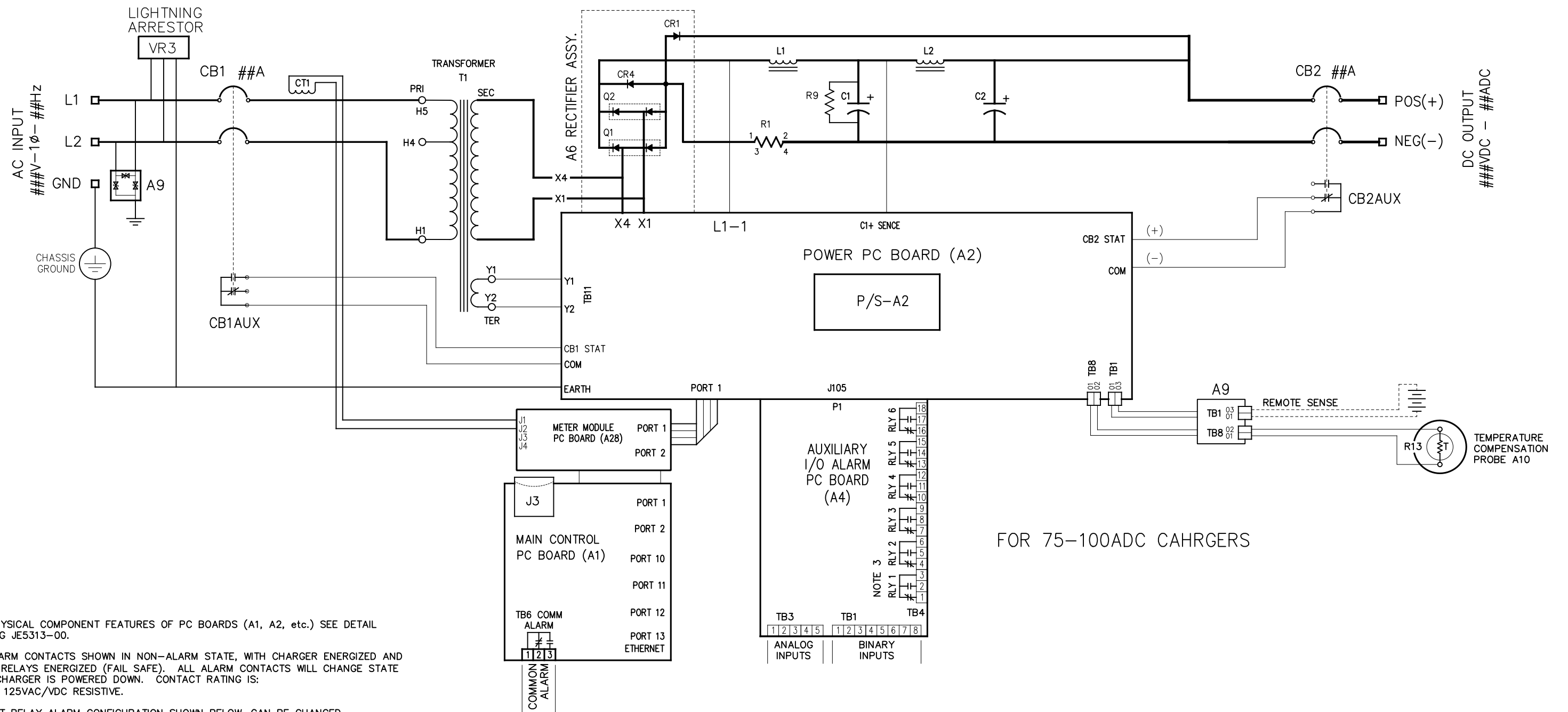
1075 Saint John Street  
Easton, PA 18042-6661  
PH 610-330-9000 FAX 610-330-8510  
www.hindlepowerinc.com

**HINDLEPOWER**

ATEVO BATTERY CHARGER  
1Ø STYLE 5070 SCHEMATIC  
WITH COMMON OPTIONS

**B** SCALE NTS DWG No JE5311-99

REV 0 SHEET 1 OF 2



NOTES:

- FOR PHYSICAL COMPONENT FEATURES OF PC BOARDS (A1, A2, etc.) SEE DETAIL DRAWING JE5313-00.
- ALL ALARM CONTACTS SHOWN IN NON-ALARM STATE, WITH CHARGER ENERGIZED AND ALARM RELAYS ENERGIZED (FAIL SAFE). ALL ALARM CONTACTS WILL CHANGE STATE WHEN CHARGER IS POWERED DOWN. CONTACT RATING IS: 0.5A @ 125VAC/VDC RESISTIVE.
- DEFAULT RELAY ALARM CONFIGURATION SHOWN BELOW. CAN BE CHANGED TO DESIRED CONFIGURATION BY USER.

A4	DESCRIPTION	LACHING	DELAY
RELAY #1	HIGH VOLTAGE DC	DISABLED	30 SECONDS
RELAY #2	LOW VOLTAGE DC	DISABLED	30 SECONDS
RELAY #3	DC OUTPUT FAILURE	DISABLED	30 SECONDS
RELAY #4	LOW AC SUPPLY	DISABLED	30 SECONDS
RELAY #5	POSITIVE GROUND FAULT	DISABLED	30 SECONDS
RELAY #6	NEGATIVE GROUND FAULT	DISABLED	30 SECONDS

REV. 0	DRN BY KJB	CHK BY MCR	APP BY MCR	DATE 12/10/19	DRN BY KJB	DATE 12/10/19	<p><b>HINDLEPOWER</b></p> <p>1075 Saint John Street Easton, PA 18042-6661 PH 610-330-9000 FAX 610-330-8510 www.hindlepowerinc.com</p>
DESCRIPTION STANDARD DRAWINGS.					CHK BY MCR	DATE 12/10/19	
					APP BY MCR	DATE 12/10/19	
					TITLE ATEVO BATTERY CHARGER 1Ø STYLE 5070 SCHEMATIC WITH COMMON OPTIONS		
					<b>B</b> SCALE NTS DWG No JE5311-99		REV 0 SHEET 2 OF 2