


No.	DRAWING No.	REV	SHT	DRAWING TITLE
1	JE5285-00	0	1	EPIC MOBILE BATTERY BOX DRAWING LIST / DATA NAMEPLATE (THIS SHEET)
2	JE5286-00	0	1	EPIC MOBILE BATTERY BOX OUTLINE: STYLE 5085 ENCL
3	JE5287-00	0	1	EPIC MOBILE BATTERY BOX INTERNAL COMPONENT LAYOUT
4	JE5288-00	0	1	EPIC MOBILE BATTERY BOX CONNECTION DIAGRAM: EJ5294-00



EPIC MOBILE BATTERY BOX

MODEL No. EJ5294-00
SERIAL No. CUSTPO#/SALES#

INPUT	OUTPUT
BATTERY BOX	DC CONNECTION 1
AC VOLTS 120/208/240	DC VOLTS 130 DC AMPERES 200
MAX. AC AMPERES 55/37/33	DC CONNECTION 2
BATTERY BOX (INCLUDING AC LINE OUT)	DC VOLTS 130 DC AMPERES 200
AC VOLTS 120/208/240	SEE INTERNAL COMPONENTS FOR BATTERY AND CHARGER SPECIFICATIONS
MAX. AC AMPERES 200/200/200	

THIS PRODUCT IS COVERED BY ONE OR MORE PATENTS AND/OR PATENT APPLICATIONS.
WWW.HINDLEPOWERINC.COM

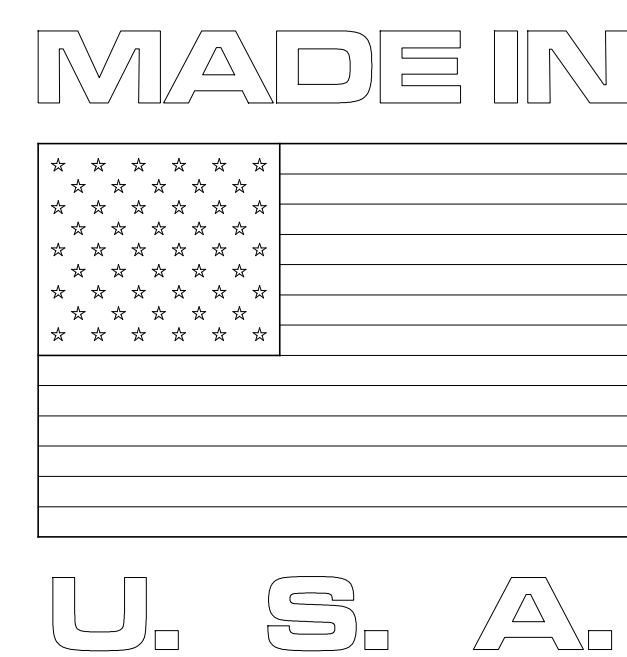
MADE IN USA

NOTE 2 →

← NOTE 1




NAMEPLATE NOTES:

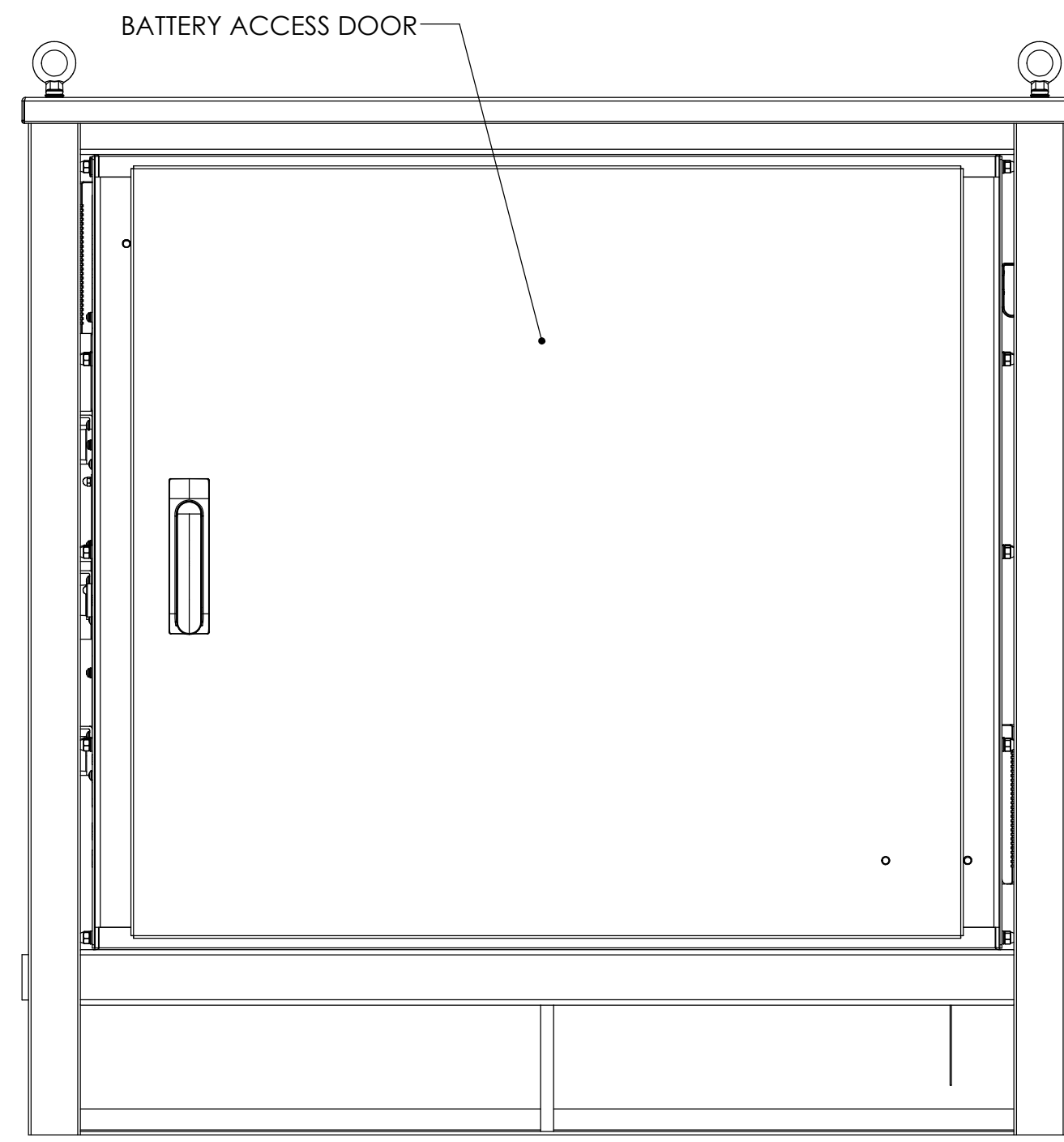
1. FEATURED SERIAL NUMBER REPRESENTS ONE UNIT. MULTIPLE UNITS WILL BE NUMBER-SEQUENCED (e.g. -1,-2,-3, etc.). IF SALES ORDER HAS MULTIPLE LINE ITEMS EACH WILL BE LETTER-SEQUENCED (e.g. -A, -B, -C etc.)
2. AC AMPERES LISTED ON DATAPLATE IS IN REFERENCE TO MAXIMUM SYSTEM AC CURRENT DRAW. MEASURED AC CURRENT DURING NOMINAL OPERATION MAY BE LOWER. USER WIRING TO S01x SHOULD CONFORM TO NEC, SITE CODES, AND BE SIZED FOR TRIP RATING OF USER FEED BREAKER.



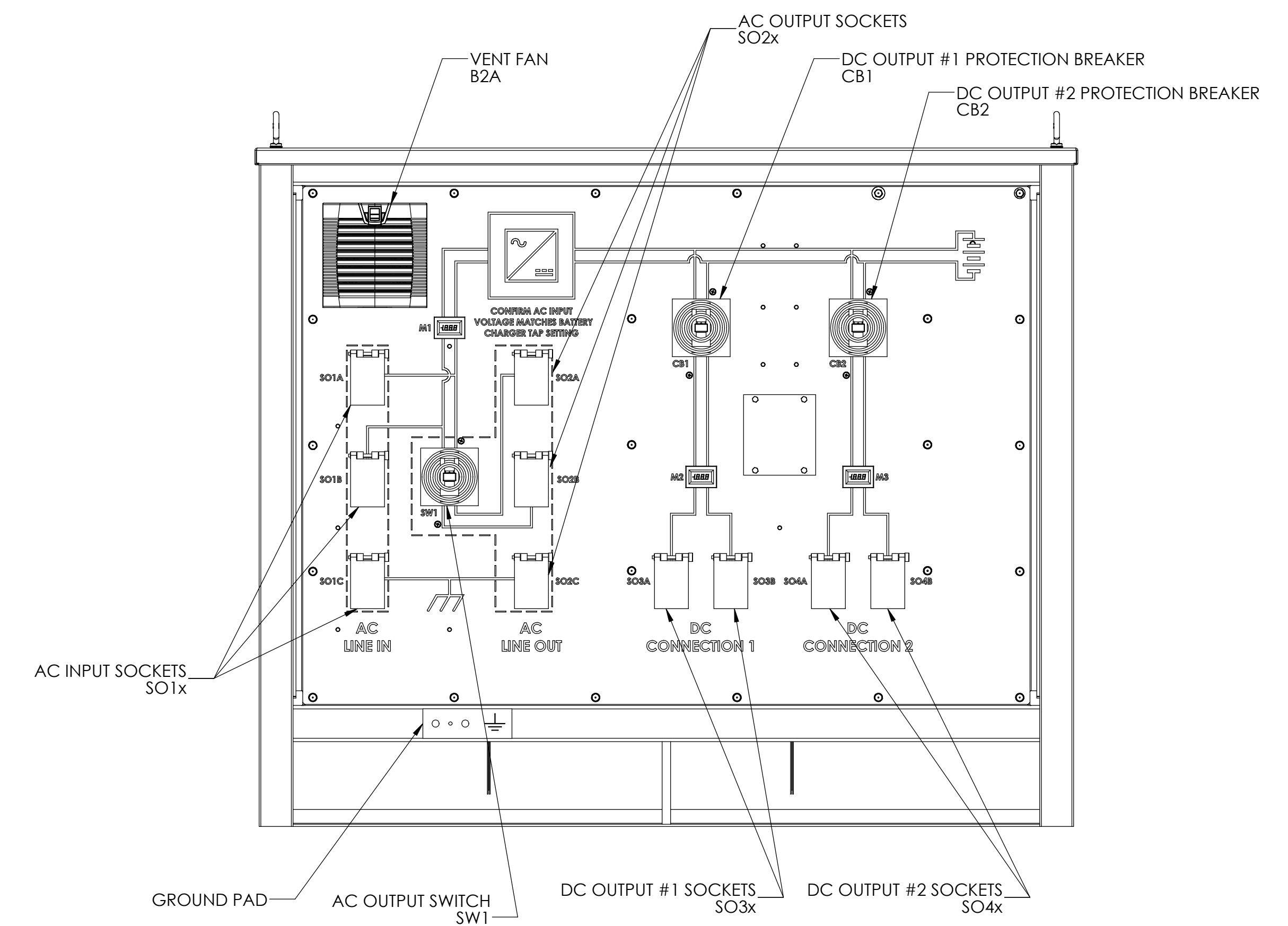
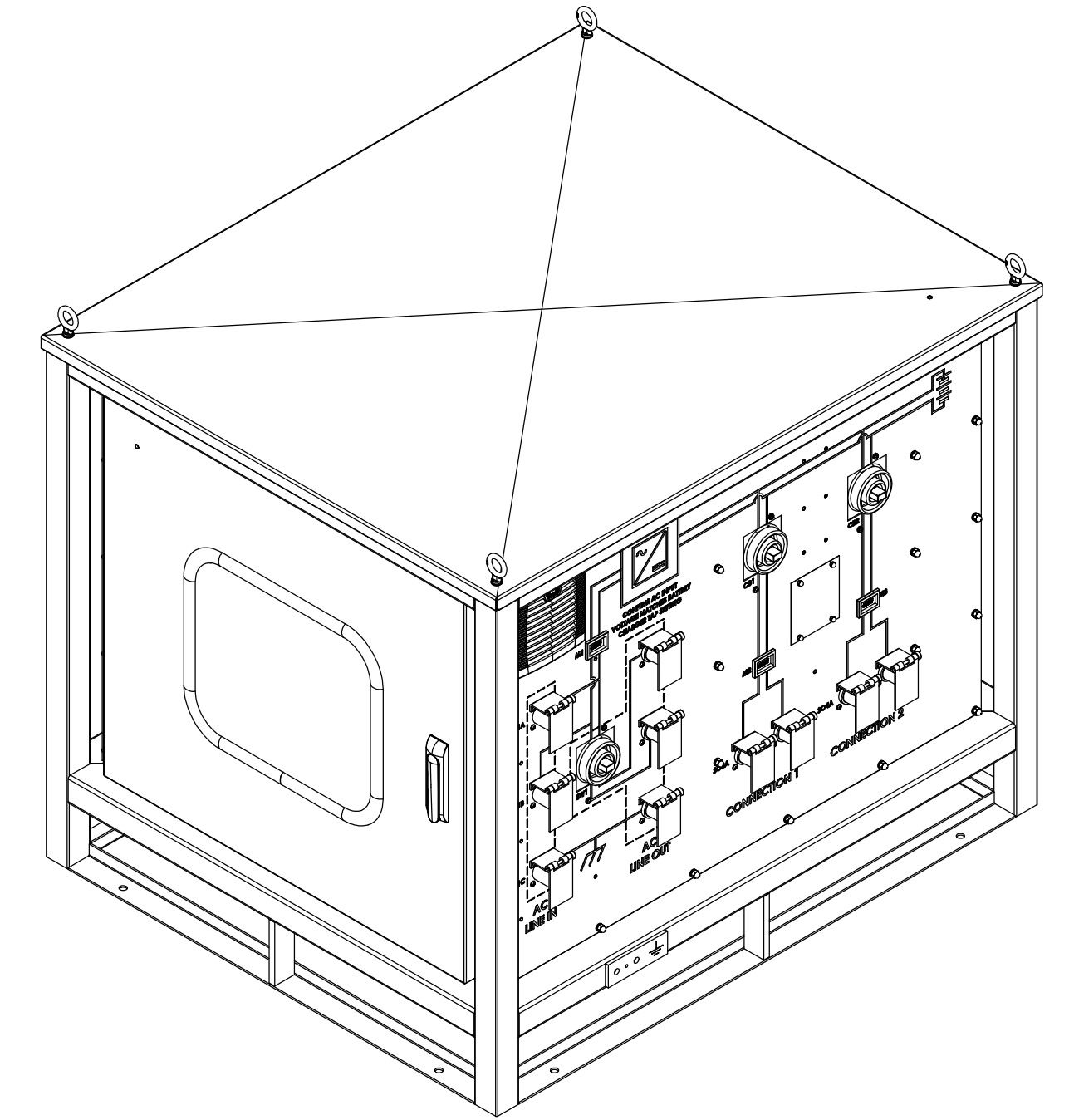
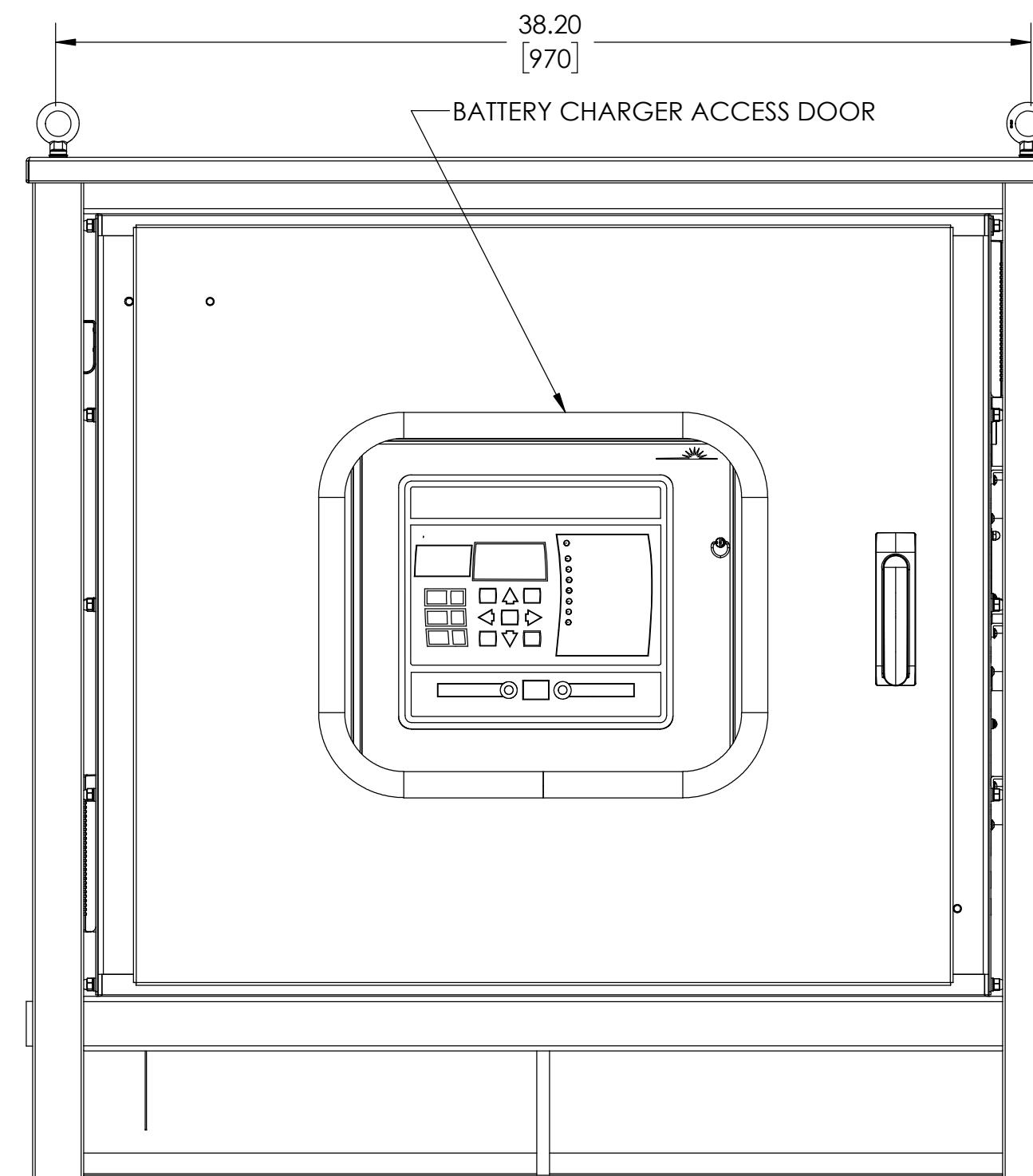
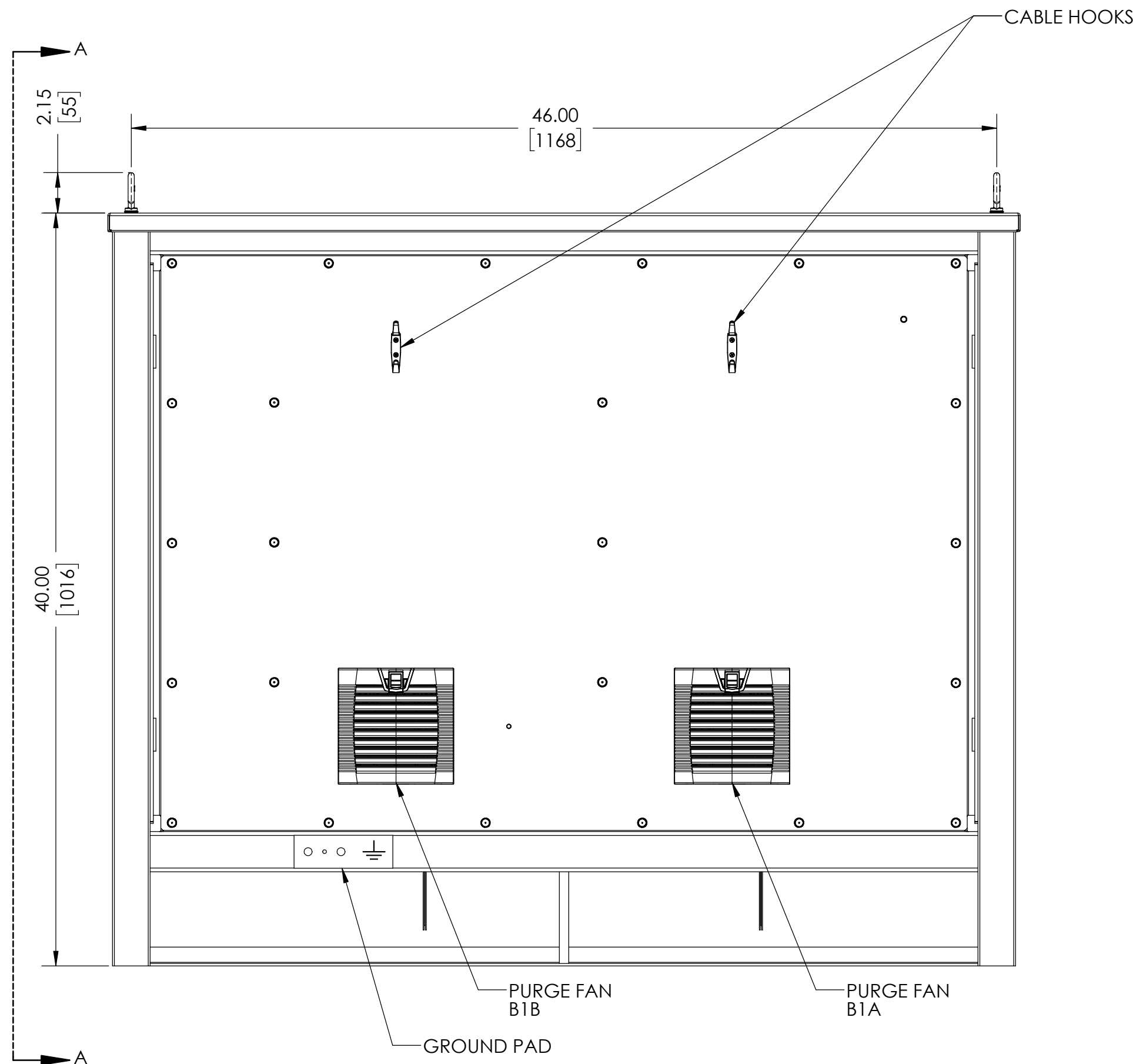
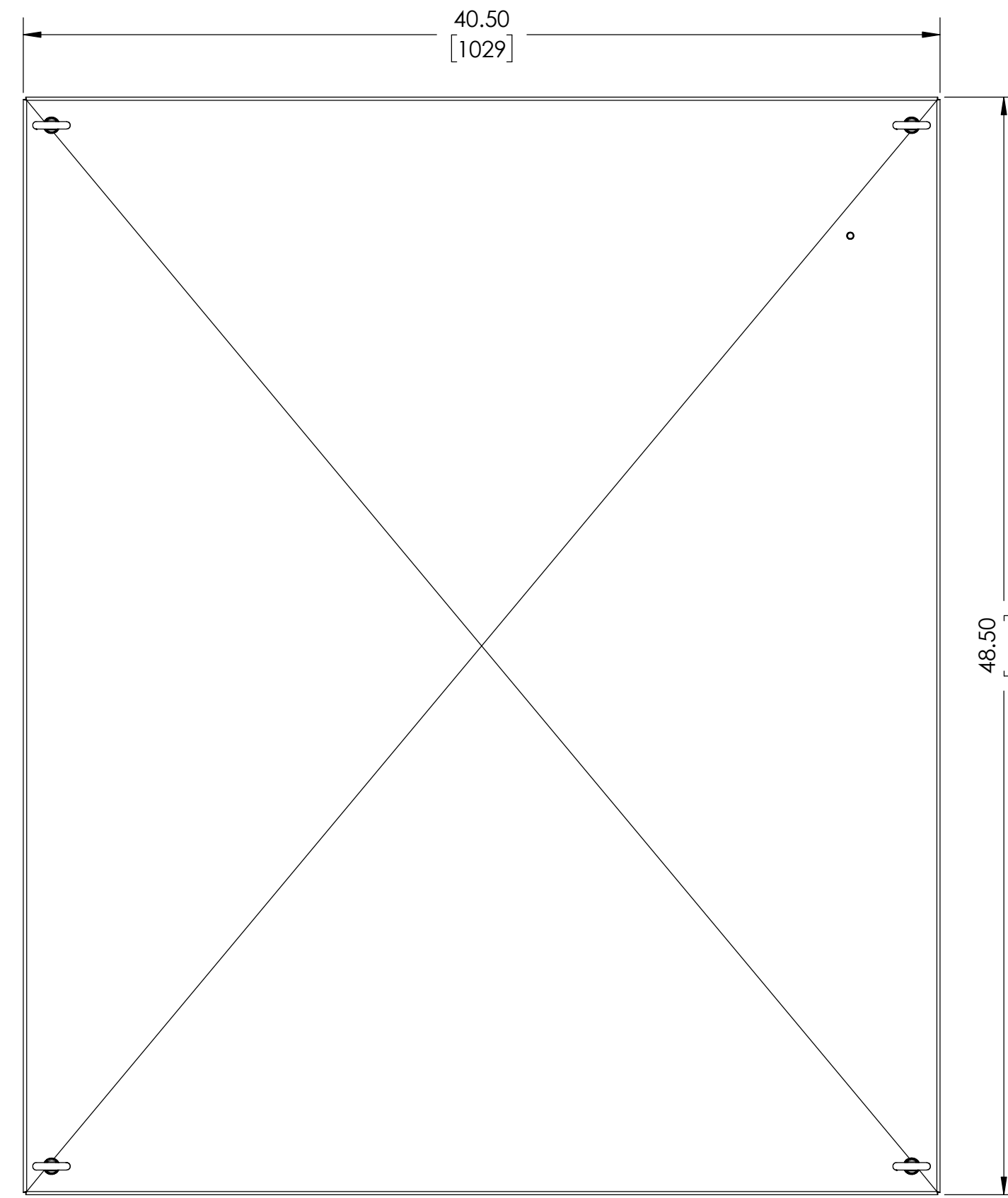
DRAWING PACKAGE NOTES:

- A. THIS DRAWING PACKAGE REPRESENTS PART NO. JH0003-00# AND, SUPERSEDES STANDARD DRAWINGS FEATURED IN UNIT'S OPERATING MANUAL.
- B. ALL SHEETS OF THE ABOVE LIST ARE A COMPLETE PACKAGE AND SHOULD NOT BE SEPARATED FROM ONE ANOTHER.
- C. ELECTRONIC VERSIONS OF THESE DOCUMENTS ARE AVAILABLE IN AutoCAD (DWG) FORMAT AND/OR Adobe Acrobat (PDF) FORMAT.

REV. DRN BY 0 KJB	CHK BY TWB	APP BY TWB	DATE 05/28/26	DRN BY KJB	DATE 05/28/26	 HINDLEPOWER 1075 Saint John Street Easton, PA 18042-6661 PH 610-336-0200 FAX 610-336-8500 www.hindlepowerinc.com		
DESCRIPTION INITIAL RELEASE				CHK BY TWB			DATE 05/28/26	
				APP BY TWB		DATE 05/28/26		
				<small>NOTES:</small> UNCONTROLLED DOCUMENT CHANGES / SOCIAL SIGNATURES MAINTAINED BY MANUFACTURER				
					D SCALE NTS	DWG NO. JE5285-00	REV 0	SHEET 1 OF 1



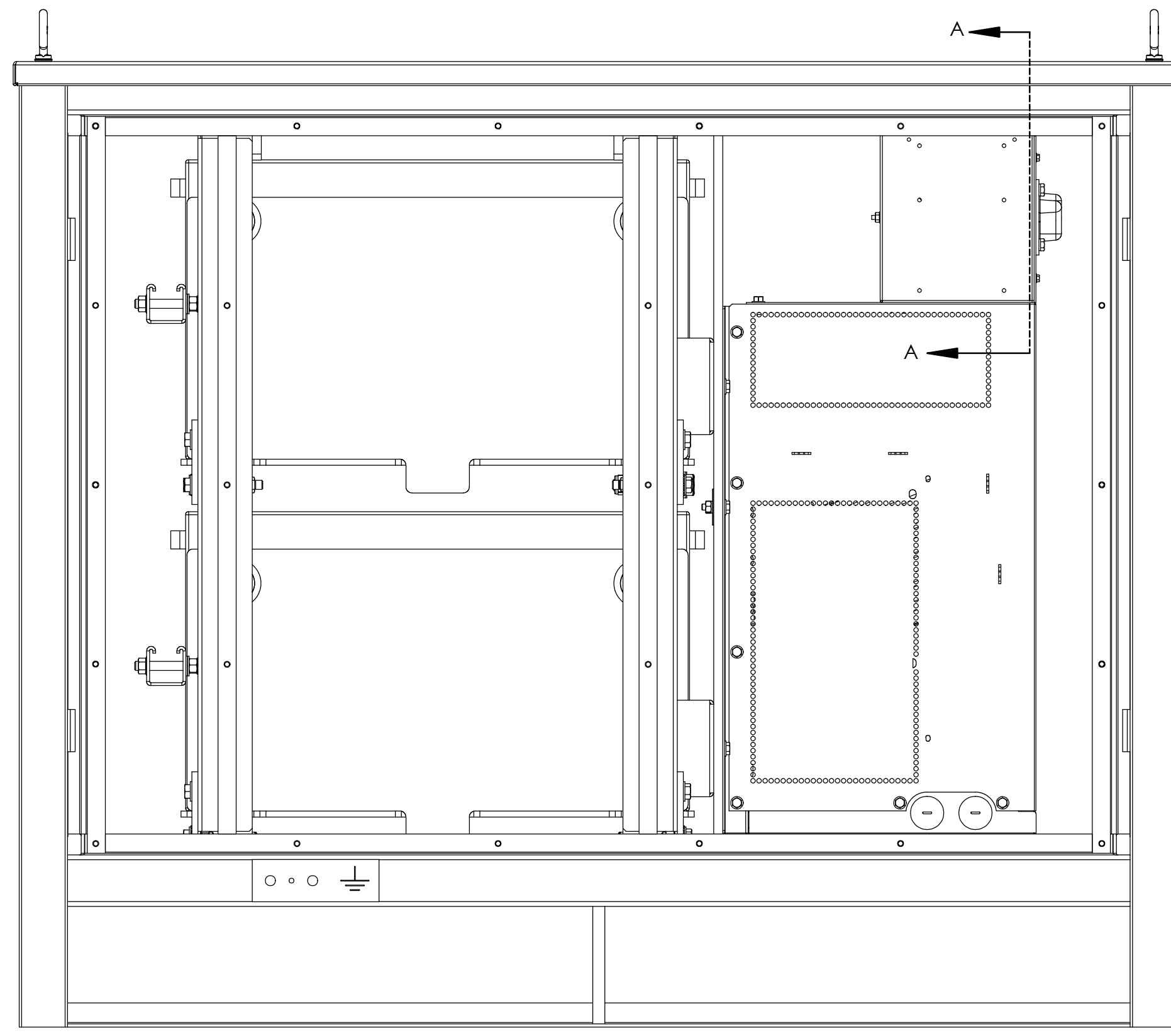
SECTION A-A



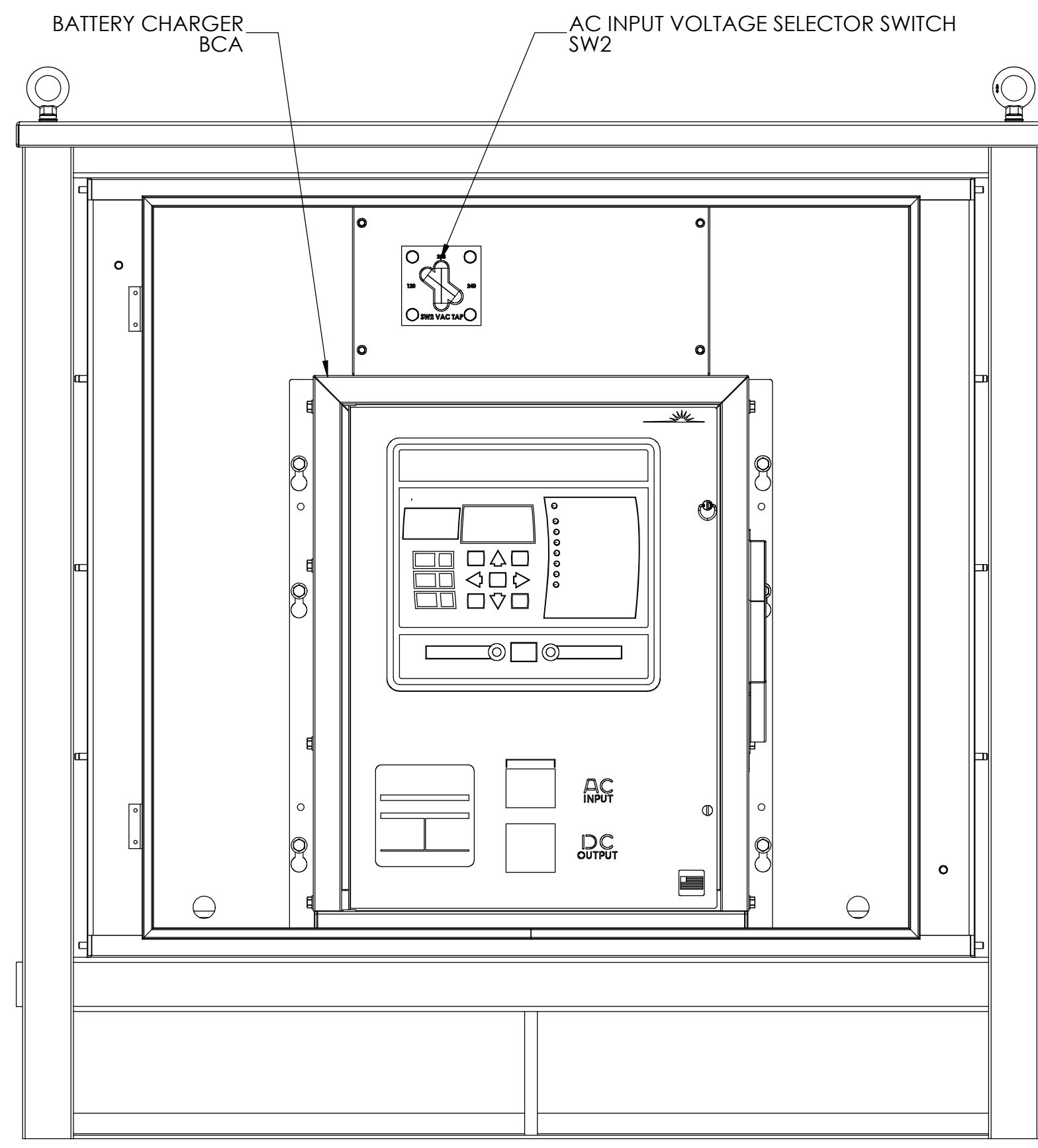
DESIGN NOTES:

- ENCLOSURE IS A NEMA-3R TYPE CABINET . FINISH IS ANSI 61 GREY POWDERCOAT.
- LOCATE UNIT ONTO A FLAT, AND LEVELED SURFACE, PREFERABLY CONCRETE OR OTHER FIREPROOF MATERIAL. SURFACE MUST BE CAPABLE OF SUPPORTING WEIGHT OF COMPLETE SYSTEM AND INSTALLED COMPONENTS.
- THE WEIGHT OF THE BATTERY BOX IS 2,093lb [948kg]

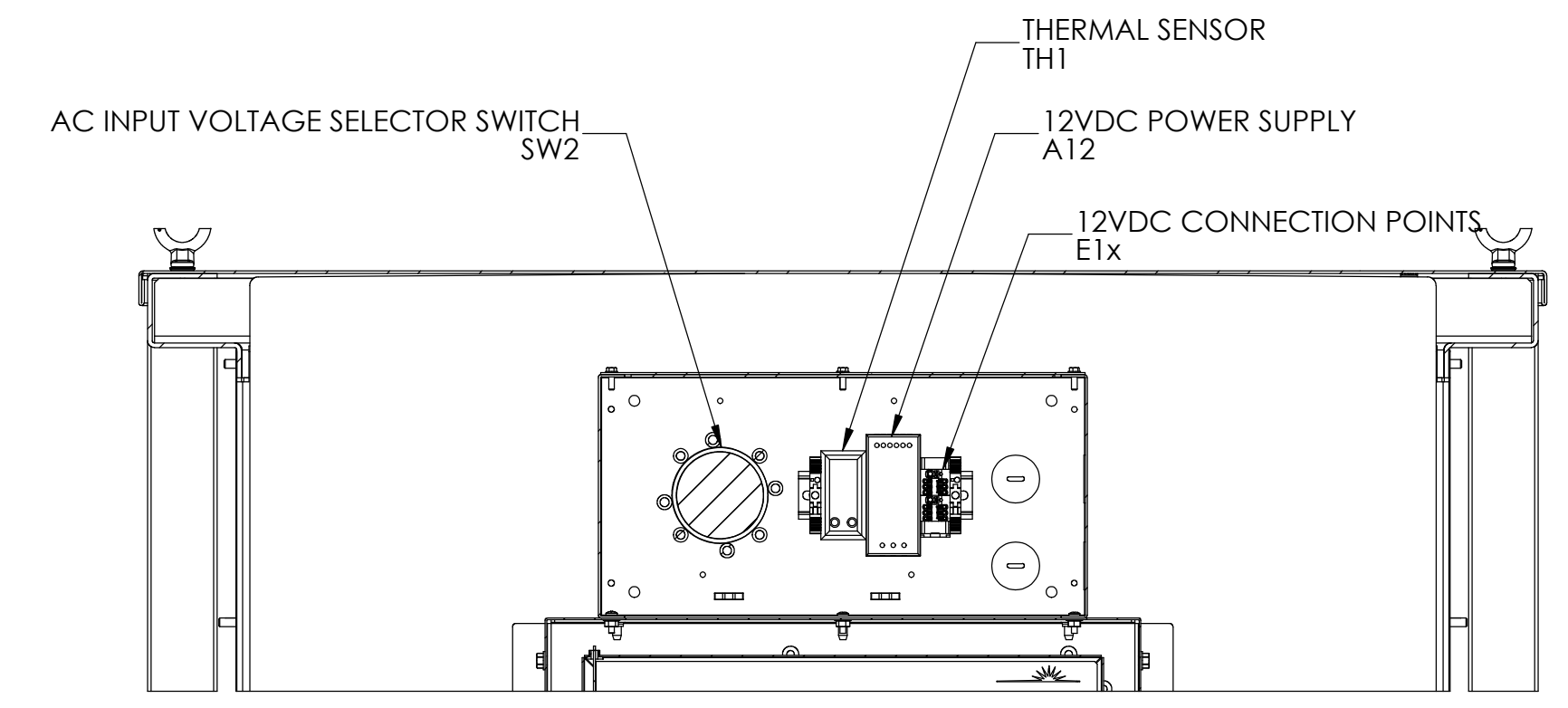
REV	DRN	CHK	APP	DATE	DRN	DATE	DRN	DATE		HINDLEPOWER 075 East 12th Street Suite 100 - 100-1000 Portland, OR 97201 www.hindlepower.com
0	KJB	TWB	TWB	05/28/26	KJB	05/28/26	TWB	05/28/26		
DESCRIPTION				INITIAL RELEASE	CHK BY	DATE	APP BY	DATE	TITLE	EPIC MOBILE BATTERY BOX OUTLINE: STYLE 5085 ENCL SALES ORDER No. N/A
					TB	05/28/26	TWB	05/28/26		
					TWB	05/28/26	TWB	05/28/26		
<small>UNLESS OTHERWISE SPECIFIED ALL DIMENSIONS FOLLOW THE INCH-POUNDS & SECONDS TOLERANCES ARE: DIM. < 1/4" DEC. ± 0.11, ANG ± 2°</small>										
SCALE: 1:6 DWG No. JE5286-00 REV 0 SHEET 1 OF 1										



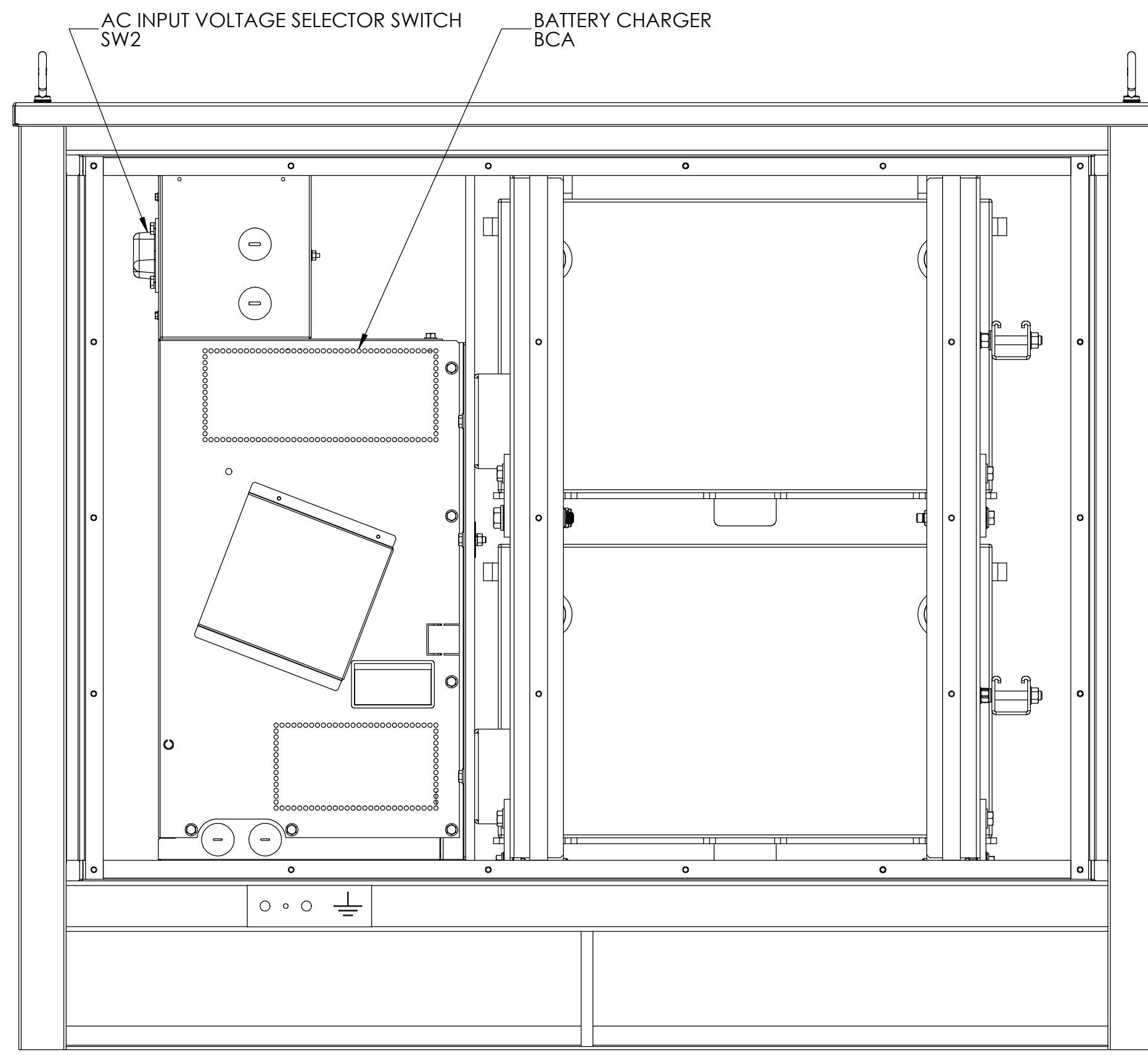
LEFT SIDE VIEW



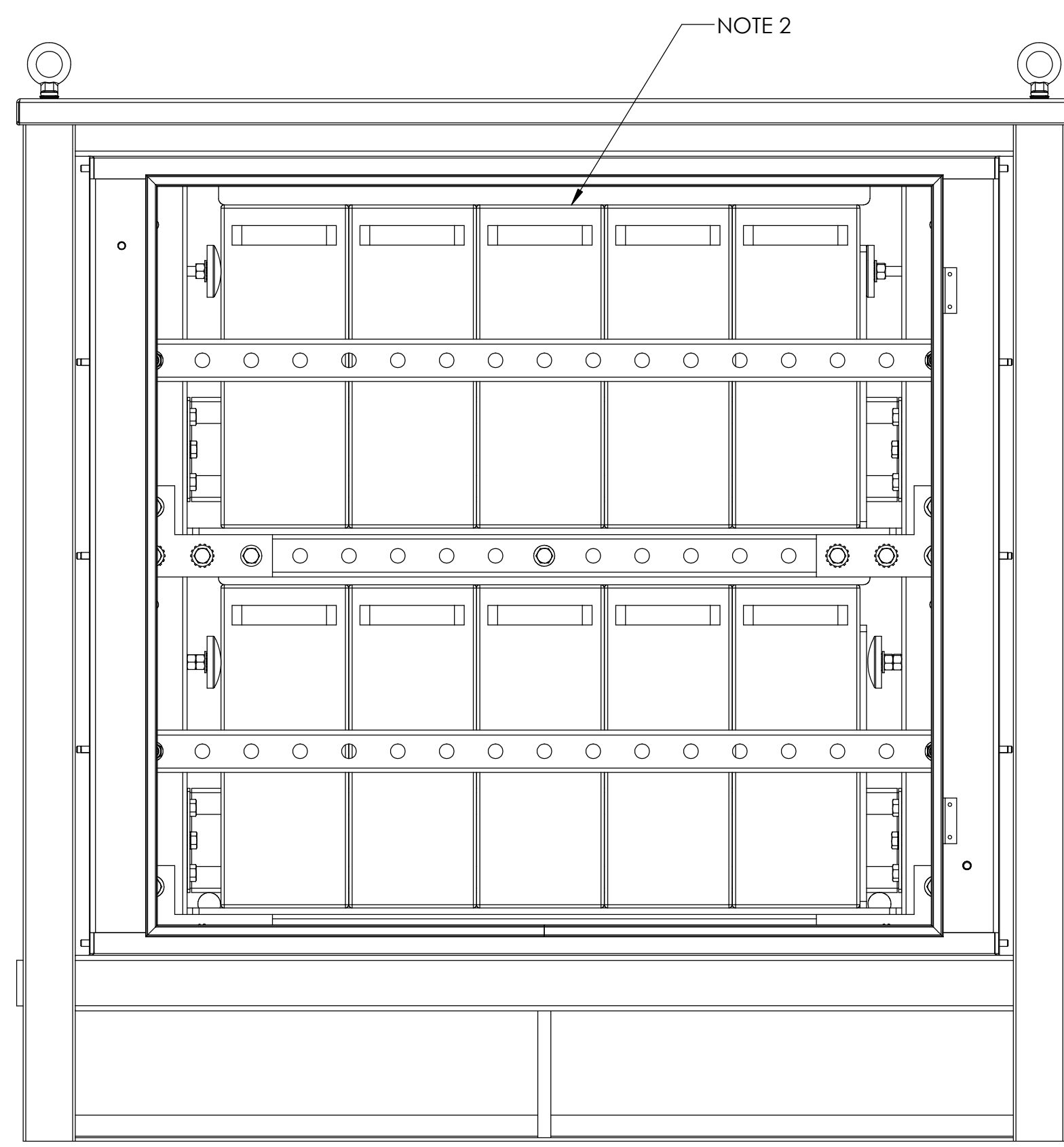
FRONT SIDE VIEW



SECTION A-A



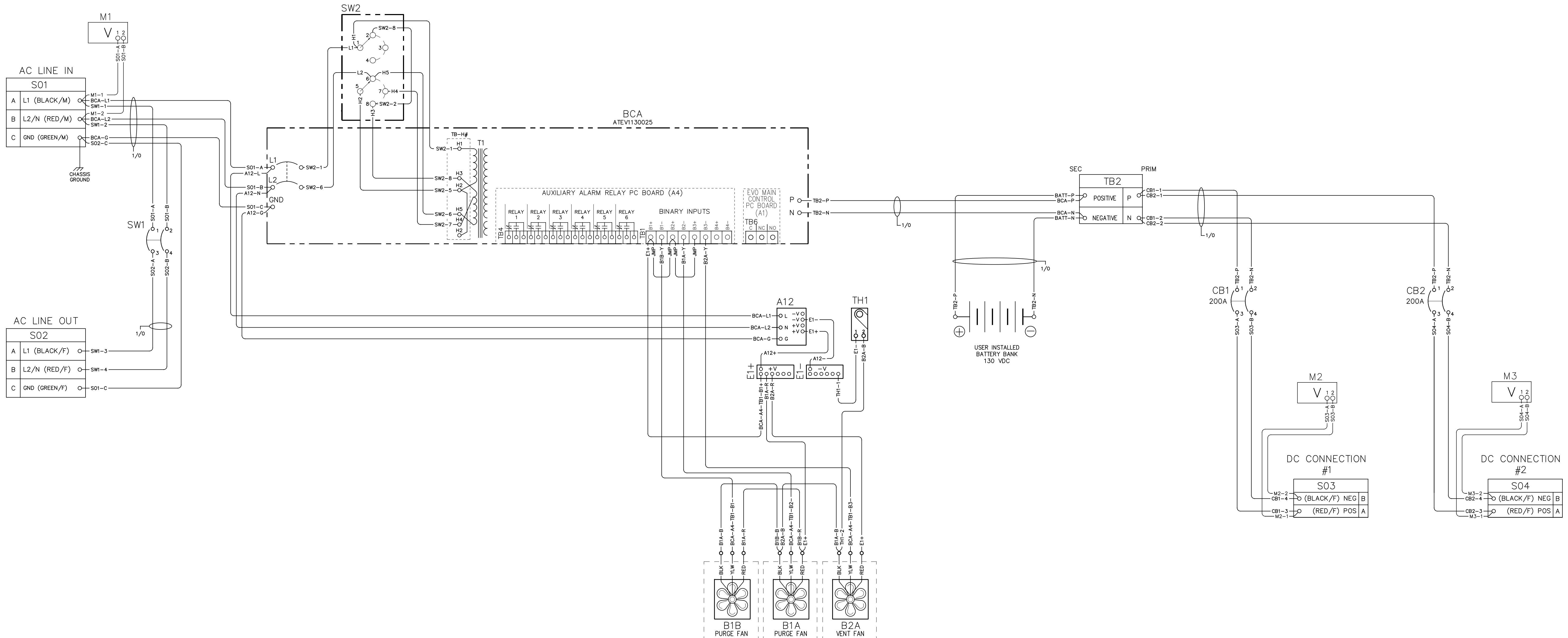
RIGHT SIDE VIEW



REAR SIDE VIEW

- NOTES:
- TO PROVIDE A CLEAR VIEW OF THE EPIC MOBILE BATTERY BOX INTERNAL COMPONENTS, THE FOLLOWING ITEMS ARE NOT SHOWN:
 - FRONT DOORS
 - REAR DOORS
 - LEFT AND RIGHT SIDE PANELS
 - BATTERY TYPE: ##

REV	DRN	CHK	BY	APP	BY	DATE	DRN	BY	DATE	 HINDLEPOWER <small>1031 East 10th Street Golden, CO 80401 Phone: 303.440.1000 www.hindlepower.com</small>
0	KJB	TWB	TWB			05/28/26	KJB	05/28/26		
							TB	05/28/26		
							TWB	05/28/26		
DESCRIPTION							TITLE		EPIC MOBILE BATTERY BOX INTERNAL LAYOUT: SALES ORDER No. N/A	
INITIAL RELEASE							SCALE		D 1:5	
<small>UNLESS OTHERWISE SPECIFIED ALL DIMENSIONS FOLLOW THE ANSI Y14.5M-2018 (INCHES-POUNDS & SECONDS) TOLERANCES ARE: FRACTIONAL DEC: 0.010, ANG: 0.25°</small>							DWG No.		JE5287-00	
							REV		0	
							SHEET		1 OF 1	



EPIC SERIES COMPONENTS

SYMBOL	DESCRIPTION
A12	12VDC POWER SUPPLY
BCX	BATTERY CHARGER
B1x	PURGE FANS
B2x	VENT FANS
CB1	DC CONNECTION #1 PROTECTION CIRCUIT BREAKER
CB2	DC CONNECTION #2 PROTECTION CIRCUIT BREAKER
E1x	12VDC CONNECTION POINTS
M1	AC VOLTMETER
M2	DC CONNECTION #1 VOLTMETER
M3	DC CONNECTION #2 VOLTMETER
S01x	AC INPUT SOCKET CONNECTIONS
S02x	AC OUTPUT SOCKET CONNECTIONS
S03x	DC SOCKET CONNECTIONS #1
S04x	DC SOCKET CONNECTIONS #2
SW1	AC LINE OUT (S02) SWITCH
SW2	AC INPUT VOLTAGE SELECTOR SWITCH
TB2	DC BUS TERMINAL BLOCK
TH1	THERMAL SENSOR

LEGEND FOR EPIC LINE

SYMBOL	DESCRIPTION
○	DEVICE TERMINAL
○	TERMINAL BLOCK POINT IN TRANSFORMER
◆	TERMINAL BLOCK POINT FOR SCADA
◆	TERMINAL BLOCK POINT FOR COMMUNICATIONS
○	TERMINAL BLOCK POINT IN POWER CIRCUIT BREAKER
△	TERMINAL IN A.C. OR D.C. PANELBOARD
---	SHIPPED WITH WIRING INSTALLED
---	WIRING TO BE INSTALLED

I/O TERMINAL	DESCRIPTION - TYPE	CONNECTION
TB2x PRIM	DC OUTPUT TERMINAL - CU-ALUMINUM COMPRESSION LUG	(1) 3/8 16 STUD
TB2x SEC	DC OUTPUT TERMINAL - CU-ALUMINUM COMPRESSION LUG	(1) 3/8 16 STUD

REV. DRN BY: KJB CHK BY: TWB APP BY: TWB DATE: 05/28/26	DRN BY: KJB DATE: 05/28/26		1075 Saint John Street Easton, PA 18042-6661 PH 610-336-8200 FAX 610-336-8500 www.hindlepowerinc.com
DESCRIPTION: INITIAL RELEASE		EPIC MOBILE BATTERY BOX CONNECTION DIAGRAM: EJ5294-00 SALES ORDER NO. N/A	
SCALE: NTS		DWG NO: JE5288-00	SHEET 1 OF 1